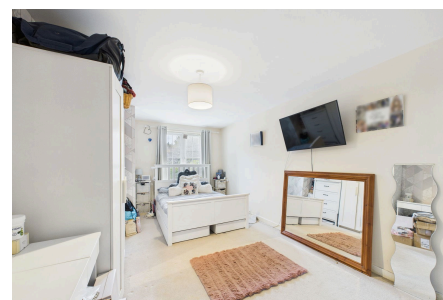


Martindales, Southwater

Guide Price £260,000

2 1 1



A Modern Ground Floor Two Double Bedroom Apartment in a Popular Village Location, boasting a double aspect 15'9" x 14'6" Reception Room, Allocated Parking and long lease.

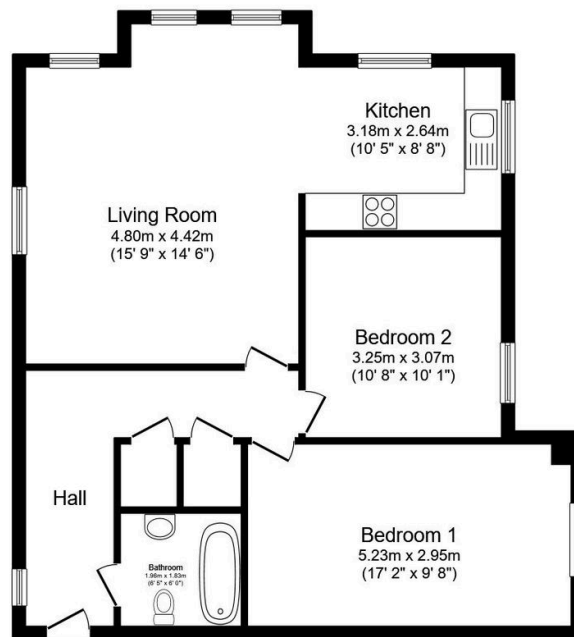
Tenure: Leasehold

Lease Length: 125 years from and including 1 January 2014

Council Tax Band: C

Key Features

- Watch Our Video Tour
- Two Generous Double Bedrooms
- Allocated Parking
- Popular Village Location
- Excellent Storage
- 15'9" x 14'6" Reception Room
- Lease In Excess Of 100 Years
- Stylish Kitchen
- Ground Floor
- Beautifully Bright Throughout



Floor Plan

Floor area 74.8 sq.m. (805 sq.ft.)

Total floor area: 74.8 sq.m. (805 sq.ft.)

This floor plan is for illustrative purposes only. It is not drawn to scale. Any measurements, floor areas (including any total floor area), openings and orientations are approximate. No details are guaranteed, they cannot be relied upon for any purpose and do not form any part of any agreement. No liability is taken for any error, omission or misstatement. A party must rely upon its own inspection(s). Powered by www.Propertybox.io