

Parsonage Road, Horsham

Offers Over £275,000

🛏 2 🚿 2 🛋 1



A beautifully presented Two Double Bedroom Apartment, boasting a 17'6" x 17'6" Open Plan Living Area, Allocated Parking and a Long Lease.

Tenure: Leasehold

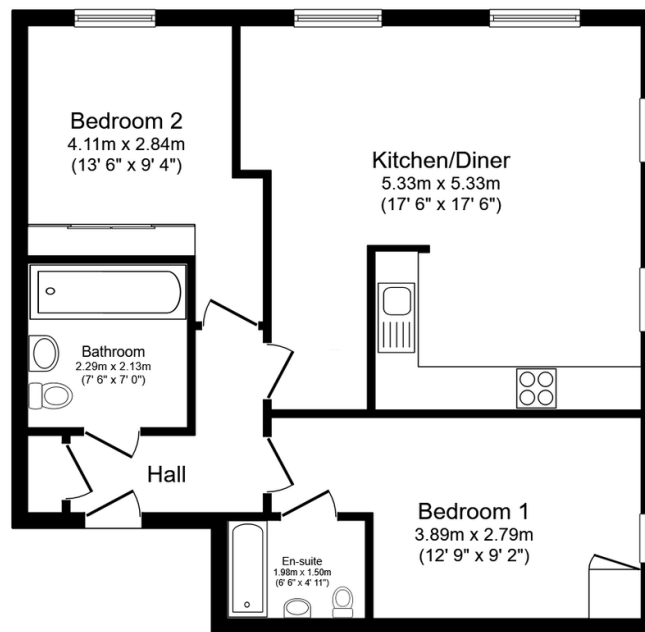
Lease Length: 125 years from 2018

Council Tax: Band C

EPC Rating; Current B - Potential B

Key Features

- Watch Our Video Tour
- Two Double Bedrooms
- En Suite To Principle Bedroom
- Stylish Kitchen
- Only 9 Years Old
- 17'6" x 17'6" Open Plan Living
- Allocated Parking
- Second Floor Apartment
- 0.8 Miles To Horsham Station
- Modern Family Bathroom



Floor Plan

Floor area 66.0 sq.m. (711 sq.ft.)

Total floor area: 66.0 sq.m. (711 sq.ft.)

This floor plan is for illustrative purposes only. It is not drawn to scale. Any measurements, floor areas (including any total floor area), openings and orientations are approximate. No details are guaranteed, they cannot be relied upon for any purpose and do not form any part of any agreement. No liability is taken for any error, omission or misstatement. A party must rely upon its own inspection(s). Powered by www.Propertybox.io