

Long Lane, Handcross

£525,000

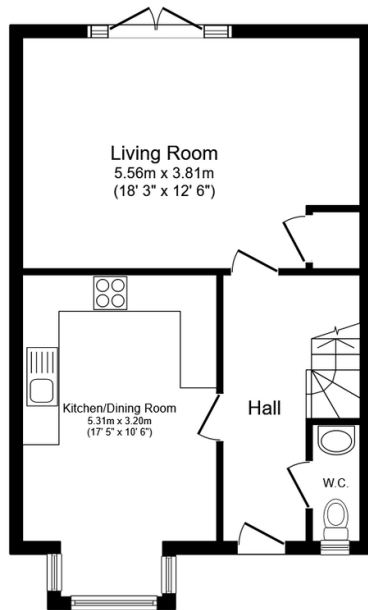
3 2 1



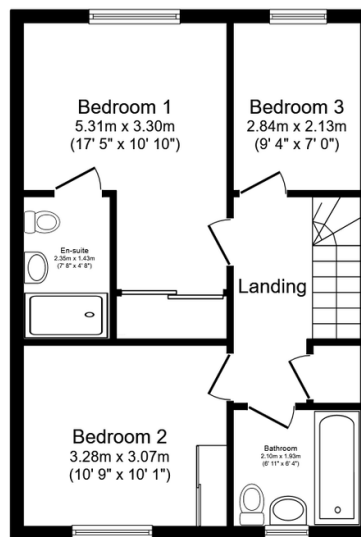
A beautifully presented, Three Bedroom DETACHED FAMILY HOME, boasting a LARGE KITCHEN DINING SPACE, an EN SUITE to the Principal Bedroom, 20ft GARAGE, set in an enviable VILLAGE LOCATION.

Key Features

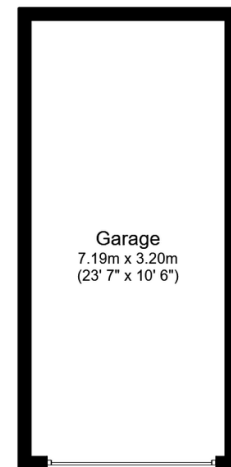
- Watch Our Video Tour
- Three Generous Bedrooms
- 17ft Kitchen/Diner
- Remainder Of NHBC Warranty
- Excellent Access To Local Schools
- Detached Family Home
- Popular Village Location
- Landscaped Rear Garden
- Built By Crest Nicholson
- En Suite To Principal Bedroom



Ground Floor
Floor area 47.7 sq.m. (514 sq.ft.)



First Floor
Floor area 46.2 sq.m. (497 sq.ft.)



Garage
Floor area 23.0 sq.m. (248 sq.ft.)

Total floor area: 116.9 sq.m. (1,259 sq.ft.)

This floor plan is for illustrative purposes only. It is not drawn to scale. Any measurements, floor areas (including any total floor area), openings and orientations are approximate. No details are guaranteed, they cannot be relied upon for any purpose and do not form any part of any agreement. No liability is taken for any error, omission or misstatement. A party must rely upon its own inspection(s). Powered by www.Propertybox.io