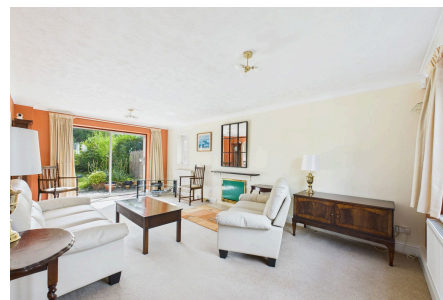


## Nuthurst Road, Monks Gate

Guide Price £850,000

🛏 4 🚿 3 🚗 3



An impressive Four Double Bedroom Detached Family Home with a self contained One Bedroom Annexe, boasting a Large South Facing Garden, excellent potential to Extend (stpp) and No Onward Chain.

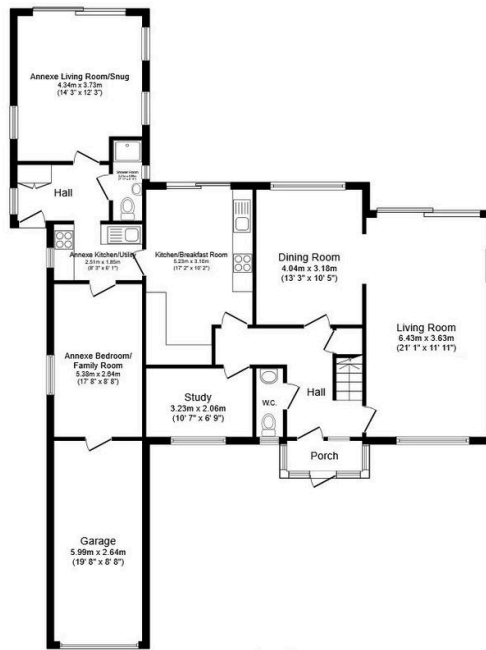
Tenure: Freehold

Council Tax: Band G

EPC Rating: Current C - Potential C

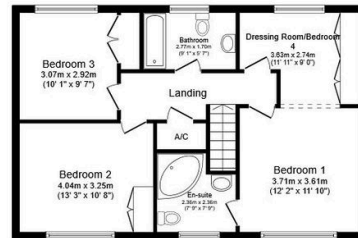
## Key Features

- Watch Our Video Tour
- Large South Facing Garden
- Self Contained One Bedroom Annexe
- Potential To Improve/Extend (stpp)
- Popular Village Location
- No Onward Chain
- Flexible Layout
- Views Across Neighbouring Fields
- En Suite To Principal Suite
- Large Driveway & 19ft Garage



**Ground Floor**

Floor area 131.1 sq.m. (1,411 sq.ft.)



**First Floor**

Floor area 66.6 sq.m. (717 sq.ft.)

Total floor area: 197.7 sq.m. (2,128 sq.ft.)

This floor plan is for illustrative purposes only. It is not drawn to scale. Any measurements, floor areas (including any total floor area), openings and orientations are approximate. No details are guaranteed, they cannot be relied upon for any purpose and do not form any part of any agreement. No liability is taken for any error, omission or misstatement. A party must rely upon its own inspection(s). Powered by [www.Propertybox.io](http://www.Propertybox.io)