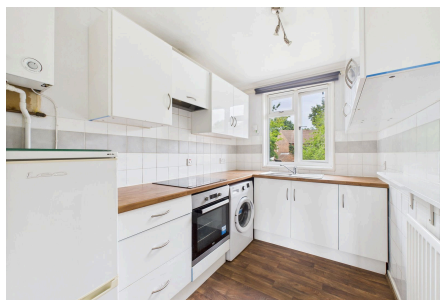


Roebuck Close, Horsham

Guide Price £210,000

2 1 1



A generous First Floor Maisonette boasting a 15'8" x 12'7" Reception Room, Excellent Storage, Allocated Parking, a lease in excess of 100 Years and No Onward Chain!

Tenure: Leasehold

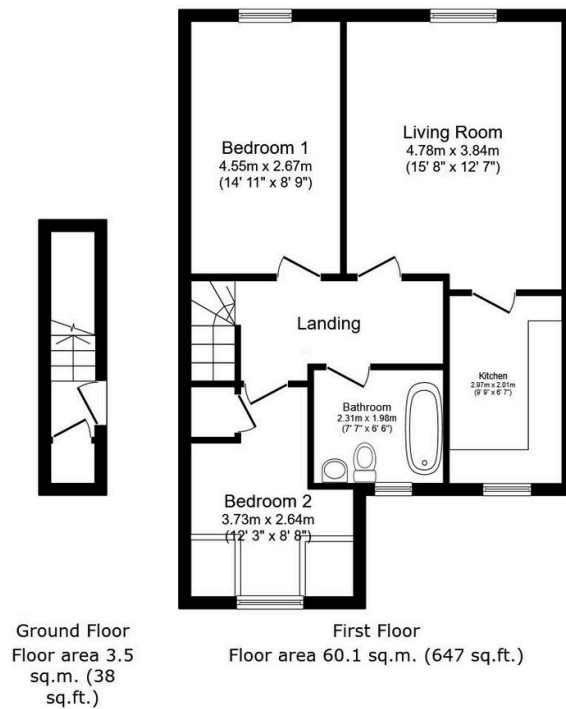
Lease Length: 201 years from 4 December 1989

Council Tax Band: B

EPC: Current C - Potential C

Key Features

- Watch Our Video Tour
- No Onward Chain
- Lease Over 100 Years
- Modern Kitchen
- Two Bedrooms
- Bathroom With Window
- Excellent Storage
- Well Presented Throughout
- 15'8" x 12'7" Living Area
- Ideal First Time Buy



Total floor area: 63.6 sq.m. (685 sq.ft.)

This floor plan is for illustrative purposes only. It is not drawn to scale. Any measurements, floor areas (including any total floor area), openings and orientations are approximate. No details are guaranteed, they cannot be relied upon for any purpose and do not form any part of any agreement. No liability is taken for any error, omission or misstatement. A party must rely upon its own inspection(s). Powered by www.Propertybox.io