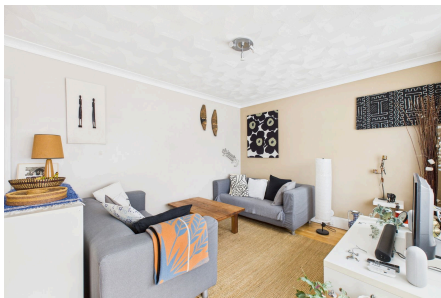


Ayshe Court Drive, Horsham, RH13 5RN

Guide Price £270,000

🛏 2 🚗 1 🚲 1



A spacious Two Double Bedroom Apartment boasting Lakeside Views, a lease of 900+ years, 26ft Living Dining Room, 17ft Garage and private Balcony.

Tenure: Leasehold

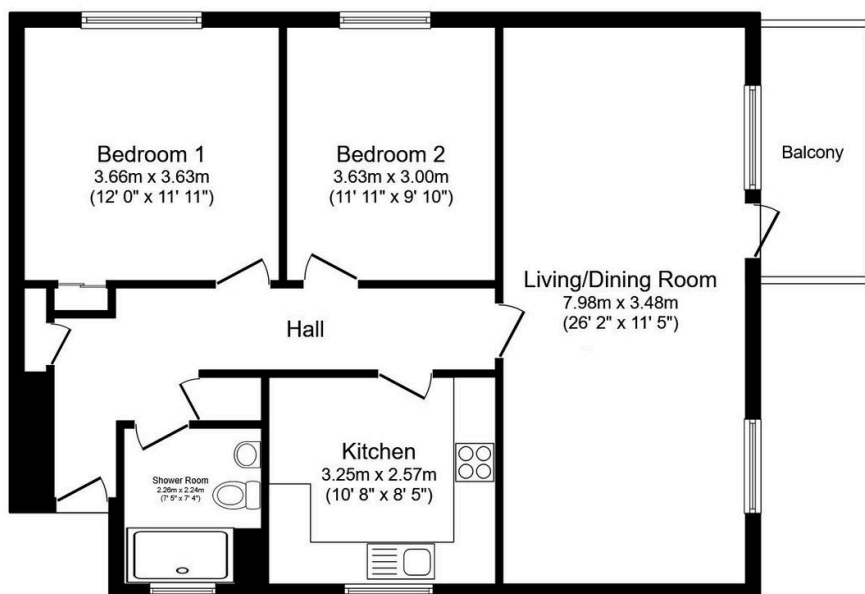
Lease Length: 999 years from 10 August 1970

Council Tax Band: C

EPC: C

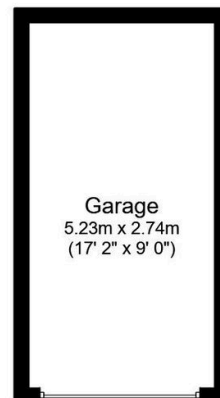
Key Features

- Watch Our Video Tour
- Two Generous Double Bedrooms
- Share Of Freehold
- Stylish Shower Room
- Excellent Storage
- 26ft Living/Dining Room
- 17'2 x 9'0 Garage
- 11ft Balcony
- 0.3 Miles To Horsham Station
- Attractive 10'8" x 8'5" Kitchen



Floor Plan

Floor area 80.7 sq.m. (868 sq.ft.)



Garage

Floor area 13.9 sq.m. (150 sq.ft.)

Total floor area: 94.6 sq.m. (1,018 sq.ft.)

This floor plan is for illustrative purposes only. It is not drawn to scale. Any measurements, floor areas (including any total floor area), openings and orientations are approximate. No details are guaranteed, they cannot be relied upon for any purpose and do not form any part of any agreement. No liability is taken for any error, omission or misstatement. A party must rely upon its own inspection(s). Powered by www.Propertybox.io