

## Parsonage Road, Horsham

Guide Price £750,000

3 1 2



An impressive Detached Family Home set on a Large Plot, offering Excellent Potential to extend(stpp), Two Detached Outbuildings and Three Generous Double Bedrooms.

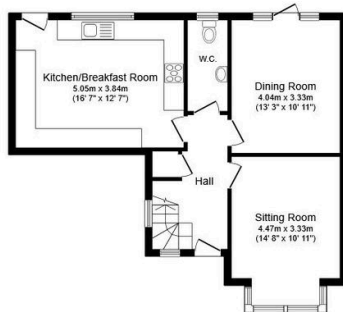
Tenure: Freehold

Council Tax Band: E

EPC: Current D - Potential C

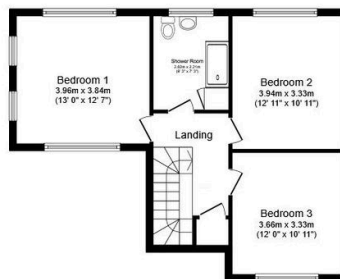
## Key Features

- Watch Our Video Tour
- Two Separate Reception Rooms
- Driveway Parking
- Extended Family Home
- 16'7 x 12'7 Kitchen Breakfast Room
- Three Generous Double Bedrooms
- Large Rear Garden
- Two Detached Outbuildings
- Potential To Extend (stpp)
- Period Features



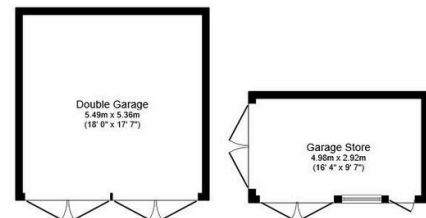
**Ground Floor**

Floor area 59.0 sq.m. (636 sq.ft.)



**First Floor**

Floor area 57.4 sq.m. (618 sq.ft.)



**Outbuilding**

Floor area 43.4 sq.m. (468 sq.ft.)

**Total floor area: 159.9 sq.m. (1,721 sq.ft.)**

This floor plan is for illustrative purposes only. It is not drawn to scale. Any measurements, floor areas (including any total floor area), openings and orientations are approximate. No details are guaranteed, they cannot be relied upon for any purpose and do not form any part of any agreement. No liability is taken for any error, omission or misstatement. A party must rely upon its own inspection(s). Powered by [www.Propertybox.io](http://www.Propertybox.io)