

## Greenfinch Way, Horsham

Guide Price £400,000

🛏 2 🚿 1 🚗 1



An attractive Semi Detached Home located in North Horsham, boasting Two Double Bedrooms, allocated Parking for two cars and a private West Facing Rear Garden.

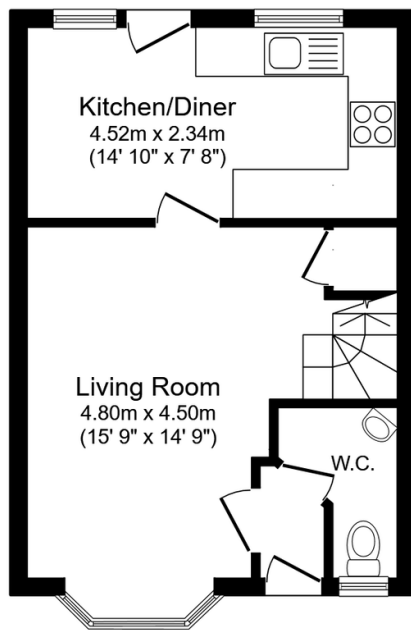
Tenure: Freehold

Council Tax Band: C

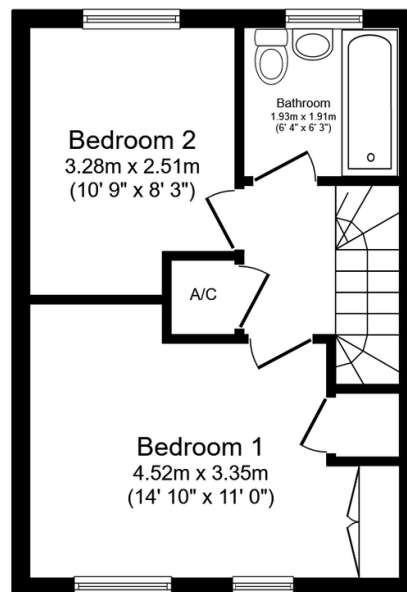
EPC: Current D - Potential C

## Key Features

- Watch Our Video Tour
- Attractive West Facing Garden
- 15ft Bay Fronted Living Room
- Parking For Two Cars
- Modern Semi Detached Home
- Two Generous Double Bedrooms
- Popular North Horsham Location
- Stylish 14ft Kitchen Diner
- Modern Family Bathroom
- Popular School Catchment



**Ground Floor**  
Floor area 31.2 sq.m. (336 sq.ft.)



**First Floor**  
Floor area 30.4 sq.m. (327 sq.ft.)

Total floor area: 61.6 sq.m. (663 sq.ft.)

This floor plan is for illustrative purposes only. It is not drawn to scale. Any measurements, floor areas (including any total floor area), openings and orientations are approximate. No details are guaranteed, they cannot be relied upon for any purpose and do not form any part of any agreement. No liability is taken for any error, omission or misstatement. A party must rely upon its own inspection(s). Powered by [www.Propertybox.io](http://www.Propertybox.io)