

## Gorse End, Horsham

Offers Over £425,000

3 1 2



A beautifully presented Semi Detached Family Home located close to popular school's, boasting a 23ft open plan Living Area, Garage and potential to improve.

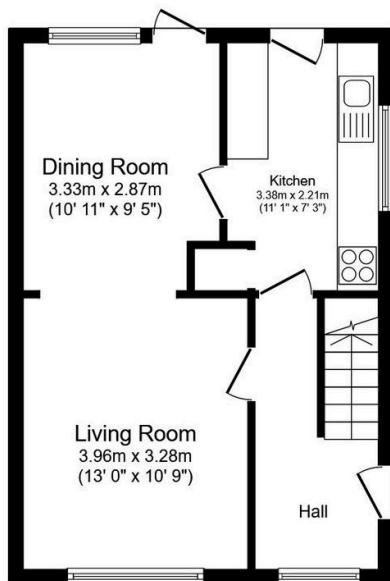
Tenure: Freehold

Council Tax: Band D

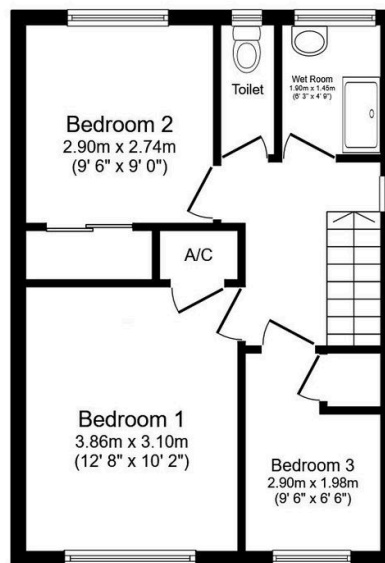
EPC Rating: Current C - Potential B

## Key Features

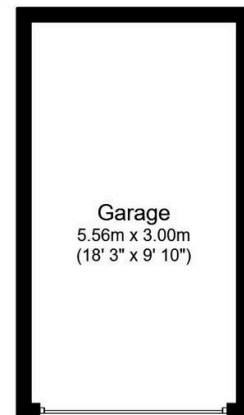
- Watch Our Video Tour
- 23ft Open Plan Living Area
- Popular School Catchment
- West Facing Garden
- Three Bedrooms
- Semi Detached Family Home
- 0.7 Miles To Littlehaven Station
- 18ft Garage
- Cul De Sac Location
- Potential To Improve



**Ground Floor**  
Floor area 39.8 sq.m. (428 sq.ft.)



**First Floor**  
Floor area 39.8 sq.m. (428 sq.ft.)



**Garage**  
Floor area 16.7 sq.m. (179 sq.ft.)

Total floor area: 96.2 sq.m. (1,036 sq.ft.)

This floor plan is for illustrative purposes only. It is not drawn to scale. Any measurements, floor areas (including any total floor area), openings and orientations are approximate. No details are guaranteed, they cannot be relied upon for any purpose and do not form any part of any agreement. No liability is taken for any error, omission or misstatement. A party must rely upon its own inspection(s). Powered by [www.Propertybox.io](http://www.Propertybox.io)