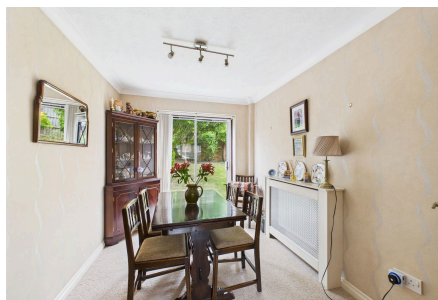


## Skylark View, Horsham

Offers Over £425,000

🛏 2 🚿 1 🚗 2



An attractive Detached Home located on a Corner Plot, boasting Two Large Double Bedrooms, potential to Extend/Improve (stpp) and No Onward Chain.

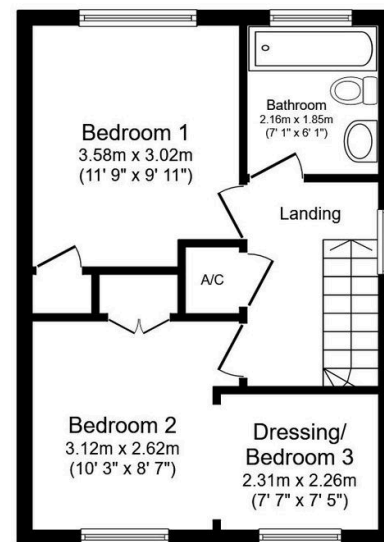
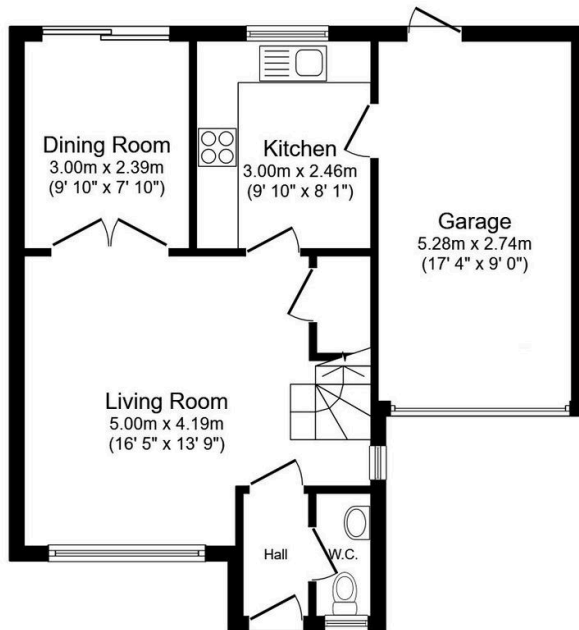
Tenure: Freehold

Council Tax: Band D

EPC Rating: Current C - Potential B

## Key Features

- Watch Our Video Tour
- Two Double Bedrooms
- Attractive Detached Home
- 17ft Garage & Driveway Parking
- Two Separate Reception Rooms
- No Onward Chain
- Dressing Room/Bedroom 3
- Corner Plot
- Popular School Catchment
- Potential To Improve/Personalise



Total floor area: 89.8 sq.m. (967 sq.ft.)

This floor plan is for illustrative purposes only. It is not drawn to scale. Any measurements, floor areas (including any total floor area), openings and orientations are approximate. No details are guaranteed, they cannot be relied upon for any purpose and do not form any part of any agreement. No liability is taken for any error, omission or misstatement. A party must rely upon its own inspection(s). Powered by [www.Propertybox.io](http://www.Propertybox.io)