

Ropeland Way, Horsham

Offers Over £425,000

 3  1  2



A modern Family Home located at the end of a small Cul De Sac close to Littlehaven Station, boasting a 17ft x 14ft Reception Rom, generous West Facing Garden and a 17ft x 8ft Garage.

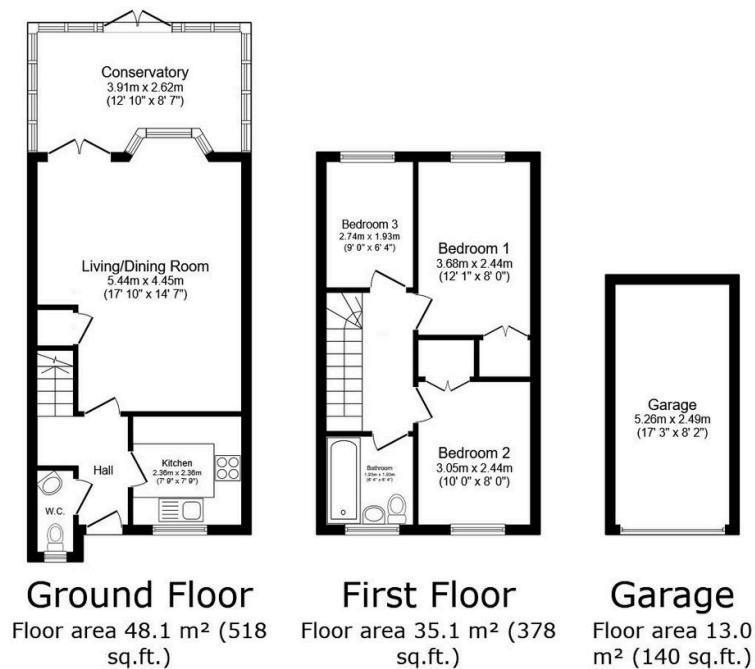
Tenure: Freehold

Council Tax: Band D

EPC Rating: Current C - Potential B

Key Features

- Watch Our Video Tour
- Cul De Sac Location
- 17ft x 8ft Garage
- West Facing Garden
- Close To Littlehaven Station
- 17'10 x 14'7 Living/Dining Room
- Three Generous Bedrooms
- Downstairs WC
- 12'10 x 8'7 Conservatory
- Popular School Catchment



TOTAL: 96.2 m² (1,036 sq.ft.)

This floor plan is for illustrative purposes only. It is not drawn to scale. Any measurements, floor areas (including any total floor area), openings and orientations are approximate. No details are guaranteed, they cannot be relied upon for any purpose and do not form any part of any agreement. No liability is taken for any error, omission or misstatement. A party must rely upon its own inspection(s). Powered by www.Propertybox.io