

## Oakfield Road, Cowfold

Offers Over £300,000

2 1 2



An exciting opportunity to purchase a Semi Detached Home in need of modernisation, boasting two large double bedrooms, an attractive West Facing Garden and no onward chain.

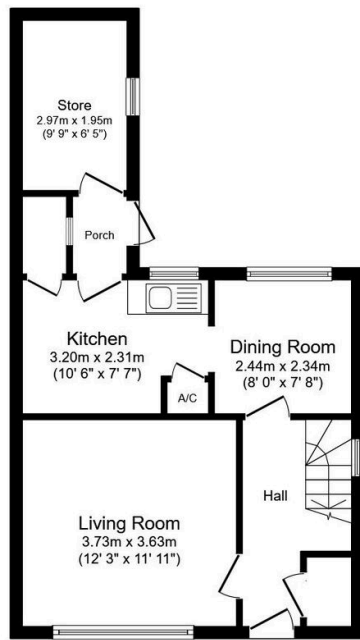
Tenure: Freehold

Council Tax Band: C

EPC: Current E - Potential B

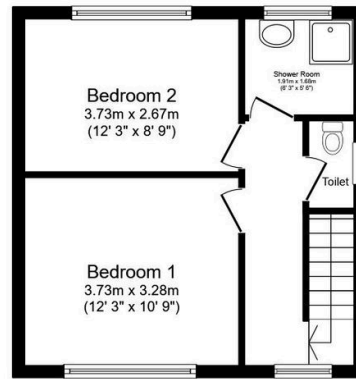
## Key Features

- Watch Our Video Tour
- No Onward Chain
- Potential To Extend (stpp)
- Popular Village Location
- Ideal First Time Purchase
- Two Large Double Bedrooms
- Attractive West Facing Garden
- In Need Of Modernisation
- Two Separate Reception Rooms
- 9'9 x 6'5 Store/Outhouse



**Ground Floor**

Floor area 42.9 sq.m. (462 sq.ft.)



**First Floor**

Floor area 34.7 sq.m. (373 sq.ft.)

Total floor area: 77.6 sq.m. (835 sq.ft.)

This floor plan is for illustrative purposes only. It is not drawn to scale. Any measurements, floor areas (including any total floor area), openings and orientations are approximate. No details are guaranteed, they cannot be relied upon for any purpose and do not form any part of any agreement. No liability is taken for any error, omission or misstatement. A party must rely upon its own inspection(s). Powered by [www.Propertybox.io](http://www.Propertybox.io)