
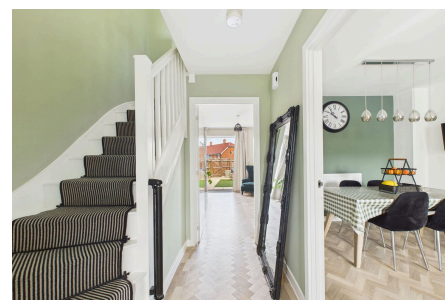


Hoppers Brook, Kilnwood Vale

Offers Over £400,000

 3  2  1



A spacious and beautifully presented Three Bedroom Family Home in a popular location, boasting a 15ft Kitchen Dining Room, Principal Bedroom with luxurious En Suite and two allocated parking spaces.

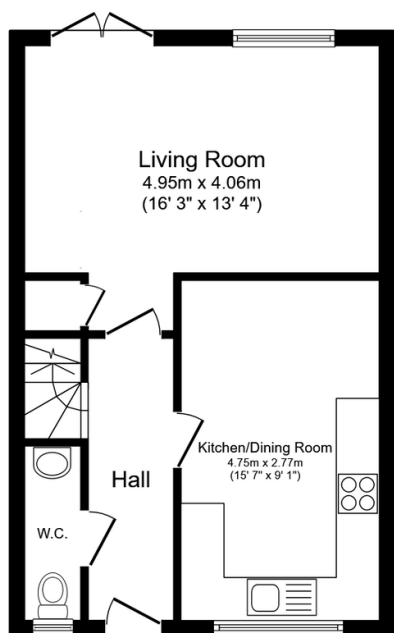
Tenure: Freehold

Council Tax Band: D

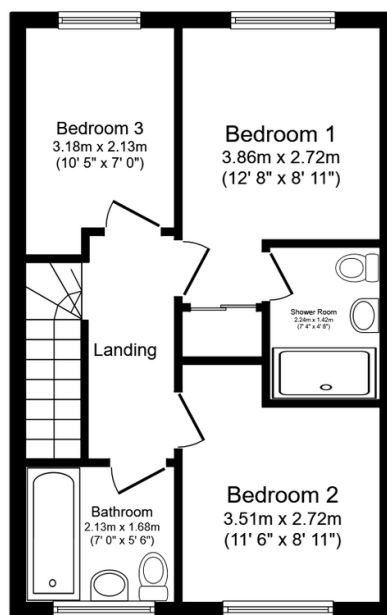
EPC: Current B - Potential A

Key Features

- Watch Our Video Tour
- 15'7 x 9'1 Kitchen Dining Room
- En Suite To Principal Bedroom
- Landscaped Rear Garden
- Ground Floor WC
- 16ft Living Room
- Three Generous Bedrooms
- Luxurious Family Bathroom
- Two Allocated Parking Spaces
- Close To Village School



Ground Floor
Floor area 39.7 sq.m. (428 sq.ft.)



First Floor
Floor area 39.7 sq.m. (428 sq.ft.)

Total floor area: 79.5 sq.m. (856 sq.ft.)

This floor plan is for illustrative purposes only. It is not drawn to scale. Any measurements, floor areas (including any total floor area), openings and orientations are approximate. No details are guaranteed, they cannot be relied upon for any purpose and do not form any part of any agreement. No liability is taken for any error, omission or misstatement. A party must rely upon its own inspection(s). Powered by www.Propertybox.io