

Pines Ridge, Horsham

Guide Price £625,000

4 2 1

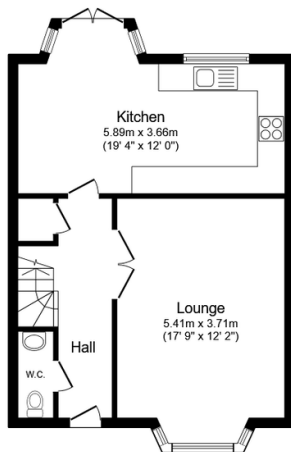


An impressive Three Storey Family Home located at the end of a Small Cul De Sac, boasting Four Large Double Bedrooms, an attractive South Facing Garden and Planning Permission Granted to extend.

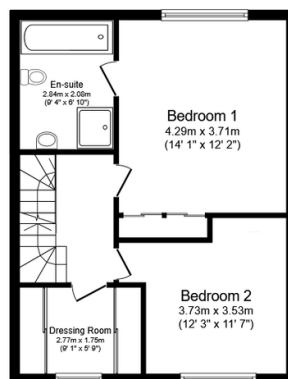
Tenure: Freehold
Council Tax: Band E
EPC Rating: Potential B - Potential B

Key Features

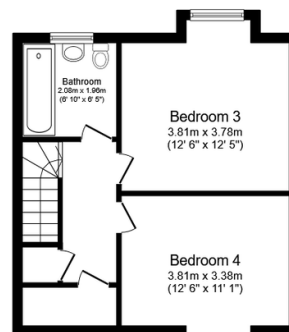
- Watch Our Video Tour
- 17ft Bay Fronted Living Room
- Private South Facing Garden
- 18ft Detached Garage & Parking
- Planning Granted To Extend
- Four Large Double Bedrooms
- 19ft Kitchen Dining Room
- Luxurious En Suite & Family Bathroom
- Tanbridge School Catchment
- Walk In Wardrobe/Potential Bedroom or Office



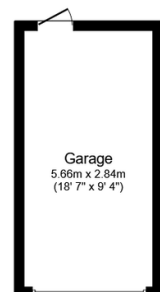
Ground Floor
Floor area 48.5 sq.m. (522 sq.ft.)



First Floor
Floor area 46.1 sq.m. (496 sq.ft.)



Second Floor
Floor area 38.3 sq.m. (412 sq.ft.)



Garage
Floor area 16.1 sq.m. (173 sq.ft.)

Total floor area: 148.9 sq.m. (1,603 sq.ft.)

This floor plan is for illustrative purposes only. It is not drawn to scale. Any measurements, floor areas (including any total floor area), openings and orientations are approximate. No details are guaranteed, they cannot be relied upon for any purpose and do not form any part of any agreement. No liability is taken for any error, omission or misstatement. A party must rely upon its own inspection(s). Powered by www.Propertybox.io