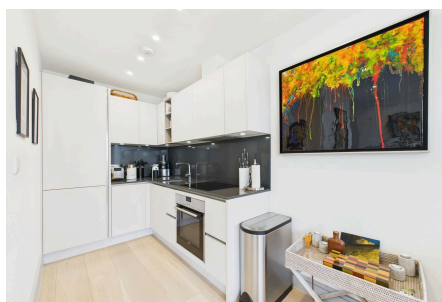
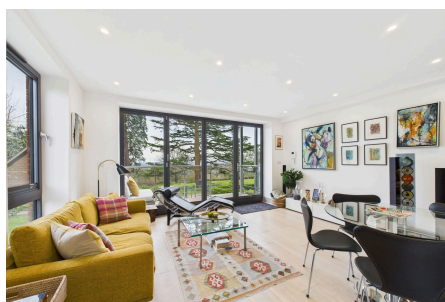


The Pavilion, Langhurstwood Road

Offers Over £335,000

2 2 1



A spectacular Two Double Bedrooms Ground Floor Apartment with Stunning Views from the Private Garden, boasting No Onward Chain, a 21ft open plan Living Area and an En Suite to the Principal Bedroom.

Tenure: Leasehold

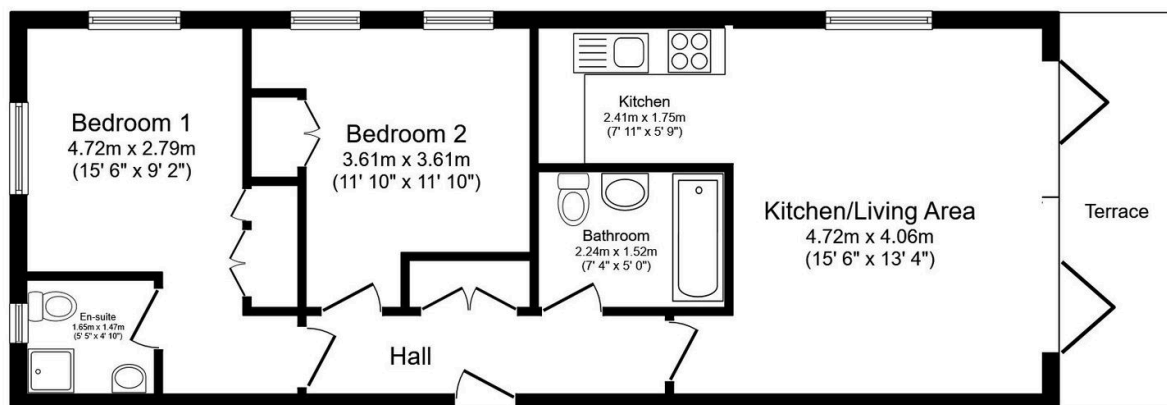
Lease Length: 242 years from 2017

Council Tax: Band B

EPC Rating: Current D - Potential D

Key Features

- Watch Our Video Tour
- Private Garden & Terrace
- 21ft Open Plan Living Area
- Stylish Fitted Kitchen
- Two Double Bedrooms
- En Suite To Principal Bedroom
- No Onward Chain
- Allocated & Visitor Parking
- Far Reaching Views Across Horsham
- Ground Floor Apartment



Floor Plan

Floor area 61.9 sq.m. (667 sq.ft.)

Total floor area: 61.9 sq.m. (667 sq.ft.)

This floor plan is for illustrative purposes only. It is not drawn to scale. Any measurements, floor areas (including any total floor area), openings and orientations are approximate. No details are guaranteed, they cannot be relied upon for any purpose and do not form any part of any agreement. No liability is taken for any error, omission or misstatement. A party must rely upon its own inspection(s). Powered by www.Propertybox.io