




## The Castle, Horsham

Guide Price £900,000

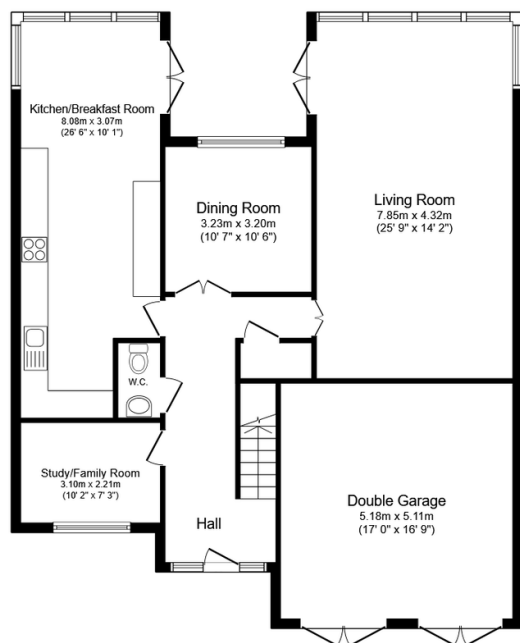
 4  2  3



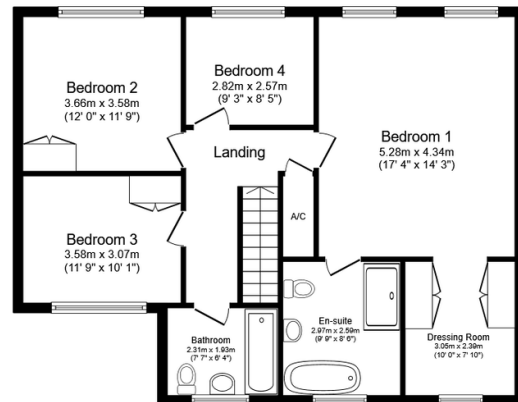
An impressive FOUR DOUBLE BEDROOM Detached Family Home located towards the end of a SMALL CUL DE SAC, boasting a 26ft KITCHEN BREAKFAST ROOM, a further THREE RECEPTION ROOMS and NO ONWARD CHAIN.

## Key Features

- Watch Our Video Tour
- Extended Detached Family Home
- Four Generous Double Bedrooms
- No Onward Chain
- Exclusive North Horsham Cul De Sac
- 26ft Kitchen Breakfast Room
- Three Large & Versatile Reception Rooms
- Principal Suite With Bathroom & Dressing Area
- Mature Private Plot
- Double Garage & Driveway Parking



**Ground Floor**  
Floor area 122.8 sq.m. (1,322 sq.ft.)



**First Floor**  
Floor area 83.7 sq.m. (900 sq.ft.)

Total floor area: 206.4 sq.m. (2,222 sq.ft.)

This floor plan is for illustrative purposes only. It is not drawn to scale. Any measurements, floor areas (including any total floor area), openings and orientations are approximate. No details are guaranteed, they cannot be relied upon for any purpose and do not form any part of any agreement. No liability is taken for any error, omission or misstatement. A party must rely upon its own inspection(s). Powered by [www.Propertybox.io](http://www.Propertybox.io)