

Burns Close, Horsham

Offers Over £600,000

4 2 1



An Extended and beautifully presented Detached Family Home located in a small Cul De Sac, boasting a stylish 18ft Kitchen Dining Room, generous Rear Garden and an 18ft Garage.

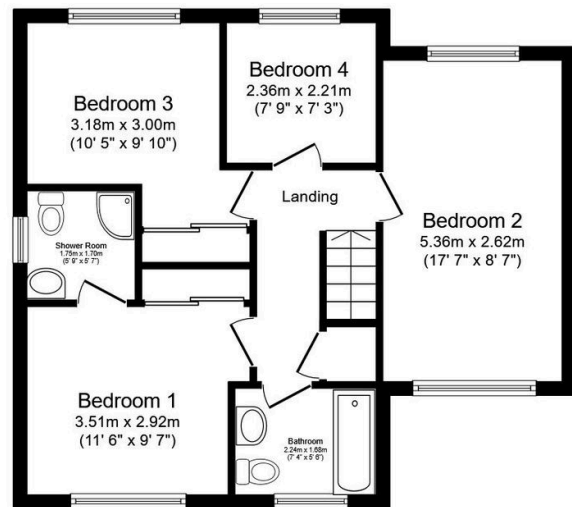
Tenure: Freehold
Council Tax: Band E
EPC Rating: Current C - Potential B

Key Features

- Watch Our Video Tour
- Four Bedrooms (Three Doubles)
- Spacious Living Room
- 18'0 x 8'11 Garage
- Close To Popular Schools
- Extended Detached Family Home
- Refitted 18ft Kitchen Dining Room
- En Suite To Principal Bedroom
- Generous Rear Garden
- Ground Floor WC



Ground Floor
Floor area 58.2 m² (627 sq.ft.)



First Floor
Floor area 55.4 m² (596 sq.ft.)

TOTAL: 113.6 m² (1,223 sq.ft.)

This floor plan is for illustrative purposes only. It is not drawn to scale. Any measurements, floor areas (including any total floor area), openings and orientations are approximate. No details are guaranteed, they cannot be relied upon for any purpose and do not form any part of any agreement. No liability is taken for any error, omission or misstatement. A party must rely upon its own inspection(s). Powered by www.Propertybox.io