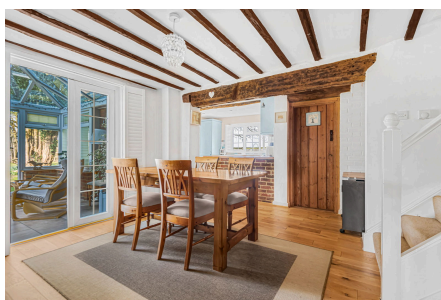


## Oakhill Cottages, Okewood Hill

Offers Over £700,000

🛏 3 🚿 2 🛋 3



An attractive Period Home that has been Greatly Extended, boasting Spectacular Views over surrounding countryside, a Large Rear Garden, a host of Original Features and a 20ft x 19ft Detached Double Garage.

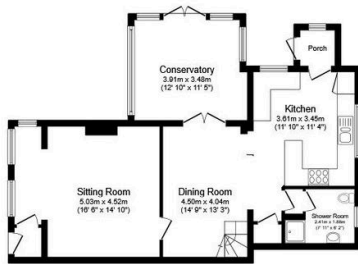
Tenure: Freehold

Council Tax: Band D

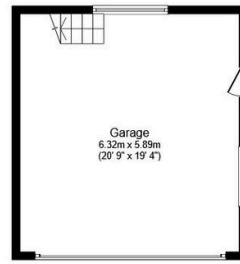
EPC Rating: Current D - Potential B

## Key Features

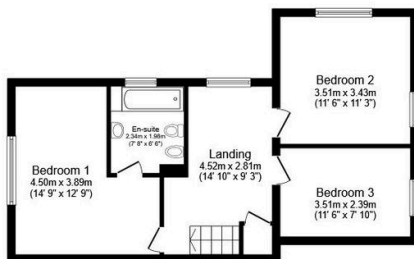
- Watch Our Video Tour
- Three Generous Bedrooms
- Host Of Original Features
- 21ft Kitchen Diner
- 20ft x 19ft Double Garage With Office Above
- Extended Period Property
- Spectacular Far Reaching Views
- Large Rear Garden
- Bathroom & Separate Shower Room
- Beautiful Semi Rural Location



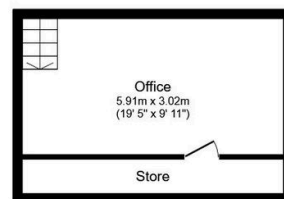
**Ground Floor**  
Floor area 74.0 m<sup>2</sup> (797 sq.ft.)



**Garage Ground Floor**  
Floor area 37.7 m<sup>2</sup> (406 sq.ft.)



**First Floor**  
Floor area 52.8 m<sup>2</sup> (568 sq.ft.)



**Garage First Floor**  
Floor area 18.7 m<sup>2</sup> (201 sq.ft.)

**TOTAL: 183.1 m<sup>2</sup> (1,971 sq.ft.)**

This floor plan is for illustrative purposes only. It is not drawn to scale. Any measurements, floor areas (including any total floor area), openings and orientations are approximate. No details are guaranteed, they cannot be relied upon for any purpose and do not form any part of any agreement. No liability is taken for any error, omission or misstatement. A party must rely upon its own inspection(s). Powered by [www.Propertybox.io](http://www.Propertybox.io)