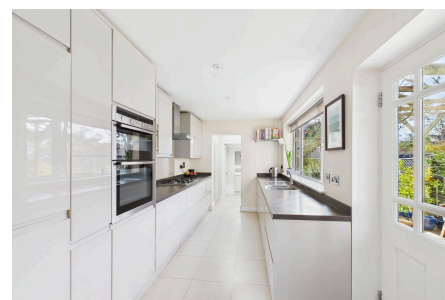
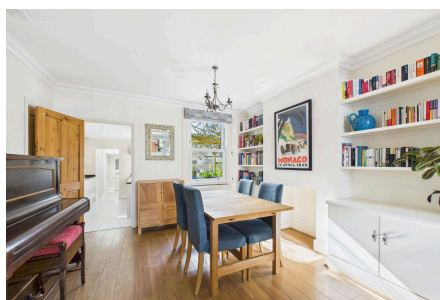


## Cambridge Road, Horsham

Guide Price £575,000

🛏 4 🍳 2 🚗 2



An extended Period Home a 'stones throw' from Horsham Station, boasting a 24ft Bay Fronted Living/Dining Room, South Facing Garden and a luxurious Principal Suite with Walk in Wardrobe and En Suite.

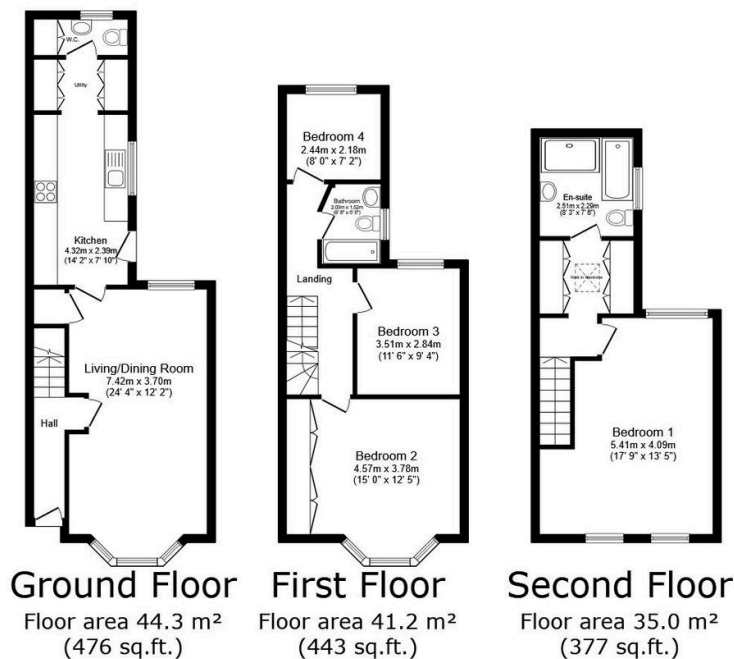
Tenure: Freehold

Council Tax Band: D

EPC: Current C - Potential B

## Key Features

- Watch Our Video Tour
- 24ft Open Plan Living/Dining Room
- Principal Suite With Dressing Area
- South Facing Rear Garden
- 0.3 Miles From Horsham Station
- Extended Period Home
- Four Generous Bedrooms
- En Suite & Family Bathroom
- Utility Room & WC
- Close To Horsham Town Centre



**TOTAL: 120.4 m<sup>2</sup> (1,296 sq.ft.)**

This floor plan is for illustrative purposes only. It is not drawn to scale. Any measurements, floor areas (including any total floor area), openings and orientations are approximate. No details are guaranteed, they cannot be relied upon for any purpose and do not form any part of any agreement. No liability is taken for any error, omission or misstatement. A party must rely upon its own inspection(s). Powered by [www.Propertybox.io](http://www.Propertybox.io)