
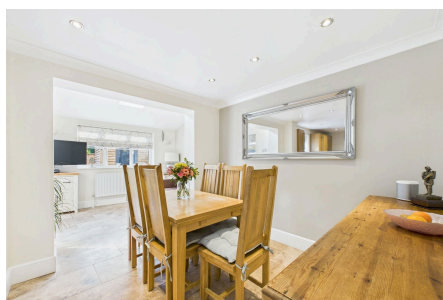


## Wild Orchid Way, Southwater

Offers Over £600,000

 4  2  3



An Extended Four/Five Bedroom Detached Family Home tucked away in a Small Cul De Sac, boasting a South Facing Garden, Stunning Principal Suite and a 21'5 x 19'3 Kitchen Dining Room.

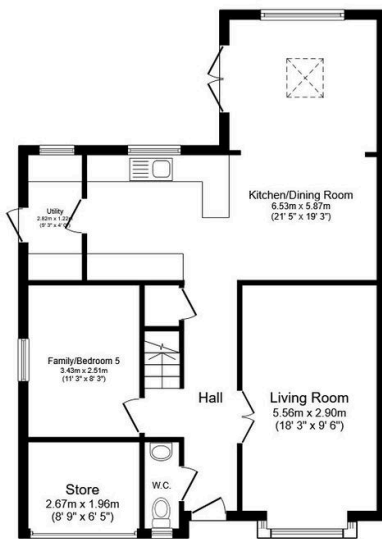
Tenure: Freehold

Council Tax: Band E

EPC Rating: Current D - Potential B

## Key Features

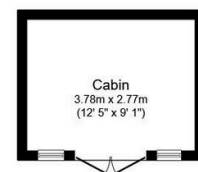
- Watch Our Video Tour
- 21'5 x 19'3 Kitchen Dining Room
- Principal Suite With Dressing Area & En Suite
- Small Cul De Sac
- Excellent Storage
- Four/Five Generous Bedrooms
- 18ft Bay Fronted Living Room
- 12'5 x 9'1 Cabin/Summer House
- Family Room/Bedroom 5
- Popular Village Location



**Ground Floor**  
Floor area 75.0 m<sup>2</sup> (808 sq.ft.)



**First Floor**  
Floor area 60.9 m<sup>2</sup> (655 sq.ft.)



**Outbuilding**  
Floor area 11.2 m<sup>2</sup> (120 sq.ft.)

**TOTAL: 147.1 m<sup>2</sup> (1,584 sq.ft.)**

This floor plan is for illustrative purposes only. It is not drawn to scale. Any measurements, floor areas (including any total floor area), openings and orientations are approximate. No details are guaranteed, they cannot be relied upon for any purpose and do not form any part of any agreement. No liability is taken for any error, omission or misstatement. A party must rely upon its own inspection(s). Powered by [www.Propertybox.io](http://www.Propertybox.io)