

Oakhill Road, Horsham

Offers Over £525,000

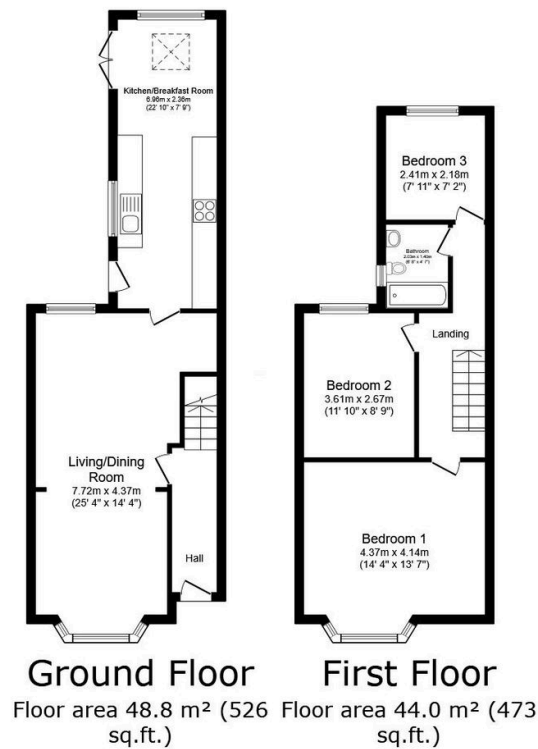
3 1 2



A stunning PERIOD HOME located a 'stones throw' from HORSHAM STATION, boasting a 25ft OPEN PLAN Living Area, 22ft REFITTED KITCHEN BREAKFAST ROOM, potential to EXTEND (stpp) and a SOUTH FACING GARDEN.

Key Features

- Beautiful Period Home
- 22ft Refitted Kitchen Breakfast Room
- 0.1 Miles From Horsham Station
- Potential To Extend (stpp)
- Popular School Catchment
- 25ft Open Plan Living Area
- Stylish First Floor Bathroom
- South Facing Garden
- Three Generous Bedrooms
- Period Features



TOTAL: 92.8 m² (999 sq.ft.)

This floor plan is for illustrative purposes only. It is not drawn to scale. Any measurements, floor areas (including any total floor area), openings and orientations are approximate. No details are guaranteed, they cannot be relied upon for any purpose and do not form any part of any agreement. No liability is taken for any error, omission or misstatement. A party must rely upon its own inspection(s). Powered by www.Propertybox.io