

Linden House, Central Horsham

Offers Over £385,000

🛏 2 🚿 2 🛋 1



A stunning Two Double Bedroom Penthouse Apartment in Horsham Town Centre, boasting bright, Open Plan accommodation, a 37ft Wraparound Terrace with spectacular views and Lifts To All Floors.

Tenure: Leasehold

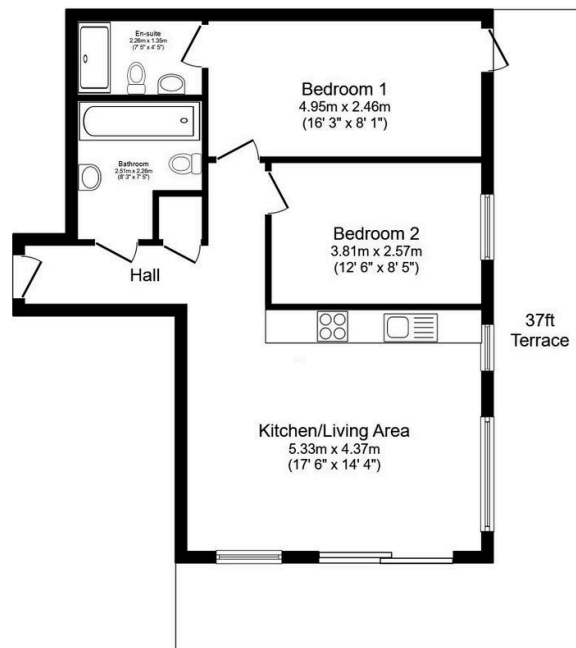
Lease Length: 125 years from January 2015

Council Tax: Band C

EPC Rating: Current B - Potential B

Key Features

- Watch Our Video Tour
- 37ft Private Terrace
- En Suite To Principal Bedroom
- Gated Underground Parking
- Town Centre Location
- Impressive Penthouse Apartment
- Two Generous Double Bedrooms
- Luxurious Bathroom Suite
- Lifts To All Floors
- 0.3 Miles From Horsham Station



Floor Plan

Floor area 62.4 sq.m. (671 sq.ft.)

TOTAL: 62.4 sq.m. (671 sq.ft.)

This floor plan is for illustrative purposes only. It is not drawn to scale. Any measurements, floor areas (including any total floor area), openings and orientations are approximate. No details are guaranteed, they cannot be relied upon for any purpose and do not form any part of any agreement. No liability is taken for any error, omission or misstatement. A party must rely upon its own inspection(s). Powered by www.Propertybox.io