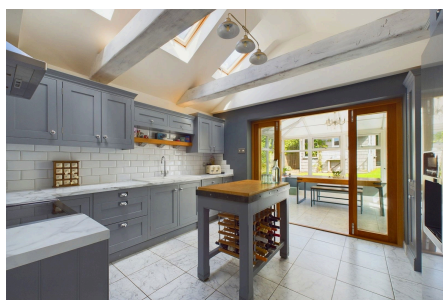


Lime Kiln Road, Mannings Heath

Offers Over £675,000

🛏 4 🚿 2 🛋 2



A stunning four double bedrooms Detached Bungalow located in a popular village, boasting a bright 24ft Living Room, stunning kitchen and master suite with Dressing Room & luxurious ensuite.

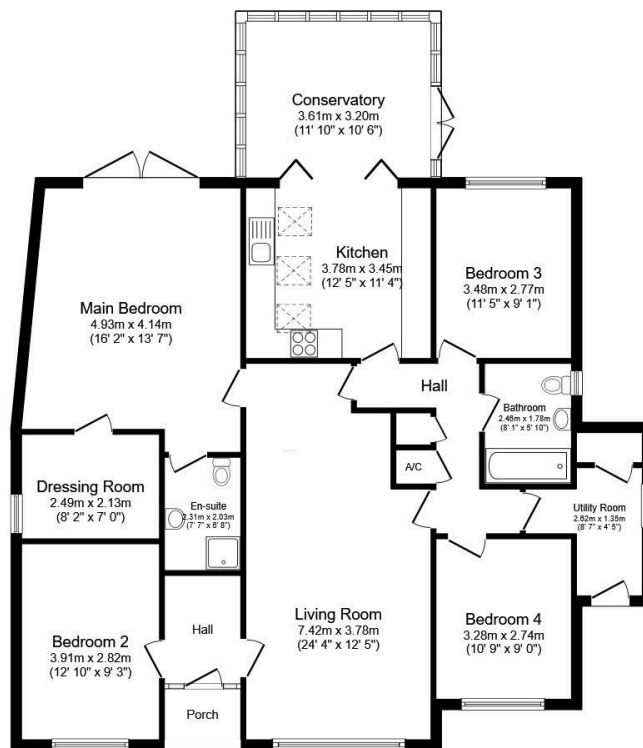
Tenure: Freehold

Council Tax Band: G

EPC: Current D - Potential C

Key Features

- Popular Village Location
- Private Rear Garden
- Stunning Kitchen
- Master With Walk In Wardrobe
- Impressive Detached Home
- Large Driveway
- 24ft Living Room
- Two Bathrooms
- Four Double Bedrooms
- Watch Our Video Tour



Floor Plan

Floor area 140.7 m² (1,514 sq.ft.)