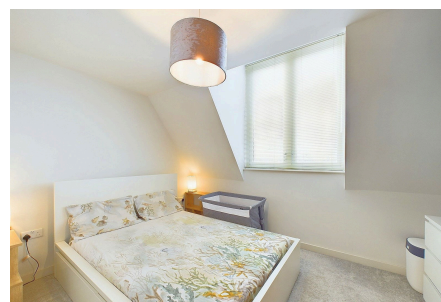
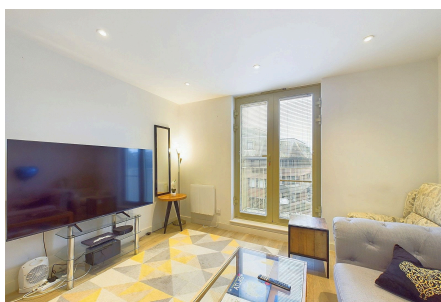


Prewetts Mill, Horsham

Guide Price £290,000

🛏 2 🚿 1 🛋 1



An impressive Top Floor Split Level Apartment located in Central Horsham, boasting a bright open plan Kitchen/Living Area, private balcony, lifts to all floors and no onward chain.

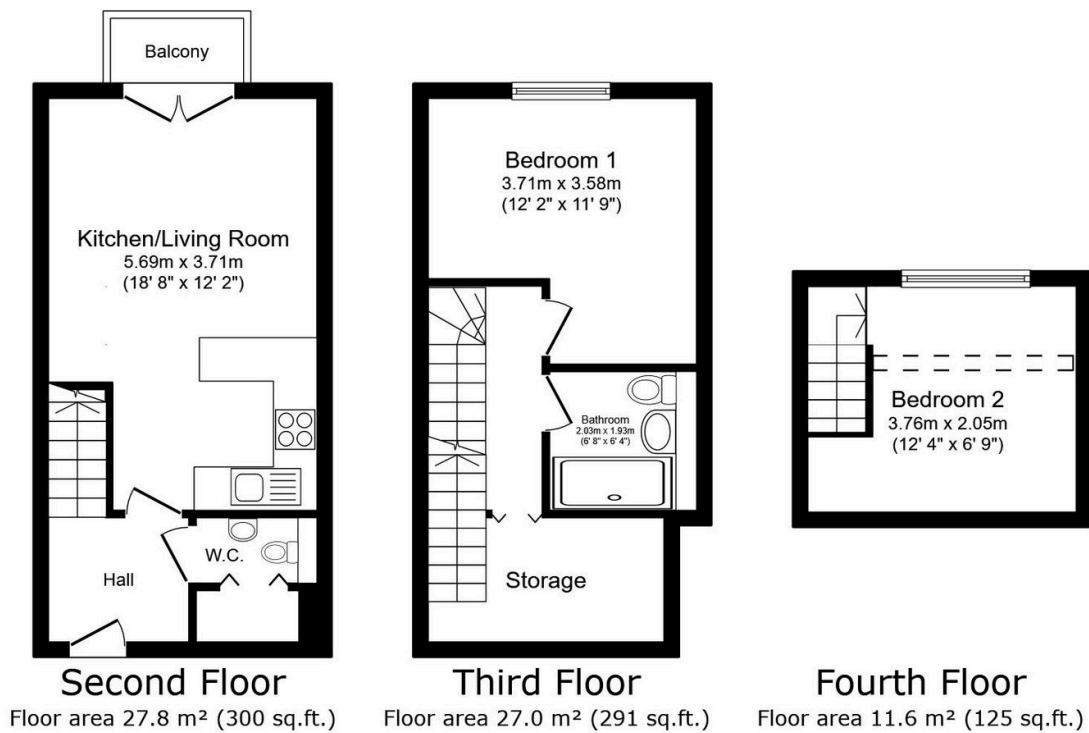
Tenure: Leasehold

Lease Length: 126 years from January 2018

EPC: Current C - Potential C

Key Features

- Watch Our Video Tour
- Open Plan Living
- Modern Integrated Appliances
- Concierge Service
- Allocated Parking Space
- No Onwards Chain
- Town Centre Location
- Split Level Accommodation
- Lift To All Floors
- Two Double Bedrooms



TOTAL: 66.5 m² (715 sq.ft.)

This floor plan is for illustrative purposes only. It is not drawn to scale. Any measurements, floor areas (including any total floor area), openings and orientations are approximate. No details are guaranteed, they cannot be relied upon for any purpose and do not form any part of any agreement. No liability is taken for any error, omission or misstatement. A party must rely upon its own inspection(s). Powered by www.Propertybox.io