


Worthing Road, Horsham

£1,200,000

 4  2  3



An Exciting Opportunity to purchase an Extended Family Home located on one of Horsham's most Prestigious Roads, boasting over 2400 Sq Ft of accommodation, a 125ft Rear Garden and Planning Permission Granted for further improvements.

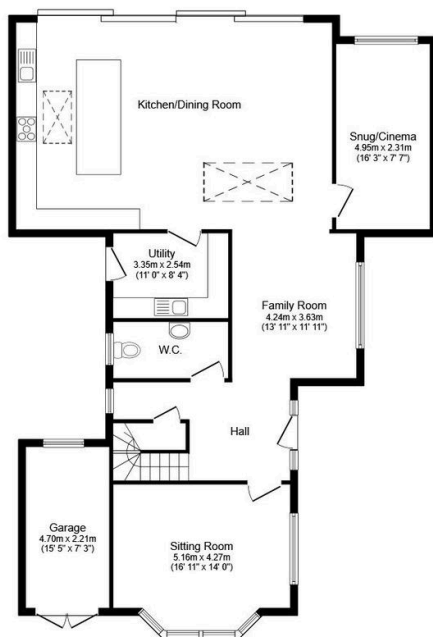
Tenure: Freehold

Council Tax: Band G

EPC Rating: Current C - Potential C

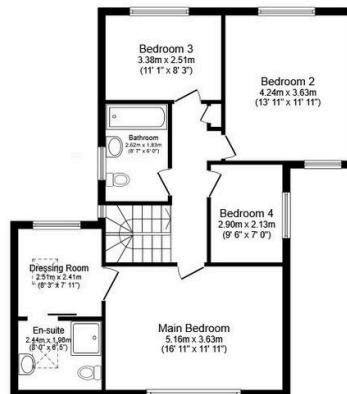
Key Features

- Watch Our Video Tour
- 125ft Private Rear Garden
- Planning Granted To Further Extend
- Impressive & Luxurious Principal Suite
- 16ft Bay Fronted Sitting Room
- Extended 34ft Kitchen Family Room
- Secure Gated Driveway Parking
- Four Generous Bedrooms
- 0.5 Miles From Horsham Town Centre
- 16ft Snug/Cinema Room



Ground Floor

Floor area 149.5 sq.m. (1,609 sq.ft.)



First Floor

Floor area 76.3 sq.m. (822 sq.ft.)



Outbuilding

Floor area 16.6 sq.m. (179 sq.ft.)

TOTAL: 242.5 sq.m. (2,610 sq.ft.)

This floor plan is for illustrative purposes only. It is not drawn to scale. Any measurements, floor areas (including any total floor area), openings and orientations are approximate. No details are guaranteed, they cannot be relied upon for any purpose and do not form any part of any agreement. No liability is taken for any error, omission or misstatement. A party must rely upon its own inspection(s). Powered by www.Propertybox.io