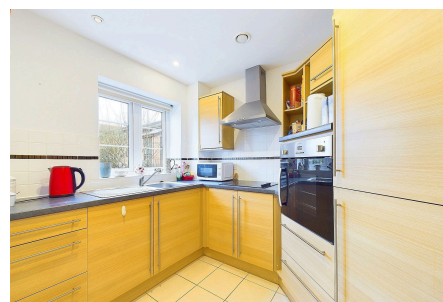


## Clarence Court, Horsham

£225,000

1 1 1



A luxurious Ground Floor Apartment for the over 60's located in Central Horsham, boasting a wonderful 24ft Living Room, fantastic communal facilities and no onward chain.

Tenure: Leasehold

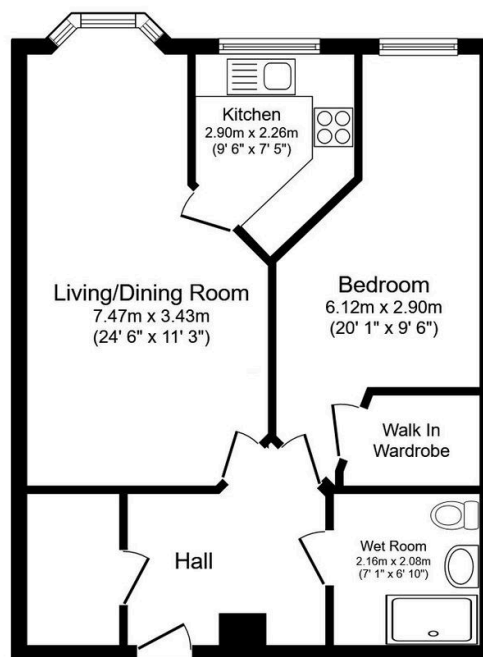
Lease Length: 125 years from 2014

Council Tax Band: C

EPC: Current C - Potential B

## Key Features

- Watch Our Video Tour
- Exclusively For Over 60's
- Large Double Bedroom
- Generous 24ft Living Room
- Modern Wet Room
- Ground Floor Retirement Apartment
- No Onward Chain
- Excellent Storage
- Wonderful Communal Facilities
- Fantastic Central Location



### Floor Plan

Floor area 54.3 m<sup>2</sup> (584 sq.ft.)

TOTAL: 54.3 m<sup>2</sup> (584 sq.ft.)

This floor plan is for illustrative purposes only. It is not drawn to scale. Any measurements, floor areas (including any total floor area), openings and orientations are approximate. No details are guaranteed, they cannot be relied upon for any purpose and do not form any part of any agreement. No liability is taken for any error, omission or misstatement. A party must rely upon its own inspection(s). Powered by [www.Propertybox.io](http://www.Propertybox.io)