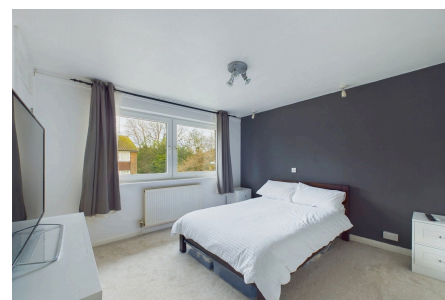


## Cotswold Court, Horsham

Offers Over £260,000

 2  1  1



A spacious split level Maisonette located in a small Cul de Sac close to Horsham Station, boasting two double bedrooms, a 16ft Garage and an extended lease.

Tenure: Leasehold

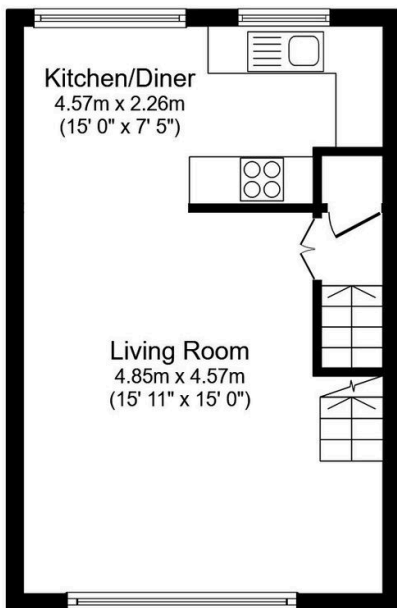
Lease Length: 169 Years

Council Tax Band: C

EPC: Current C - Potential C

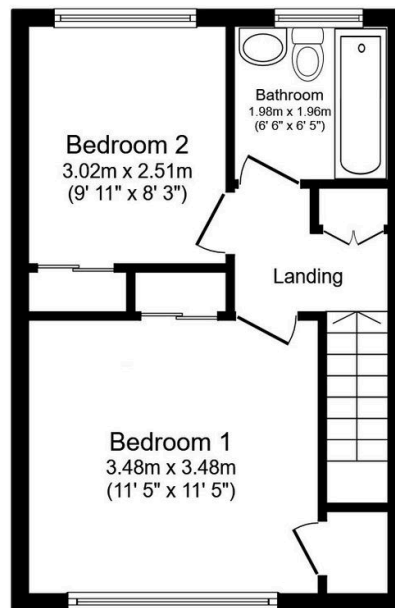
## Key Features

- Watch Our Video Tour
- Two Double Bedrooms
- Large Living Room
- Cul De Sac Location
- Split Level Maisonette
- Extended Lease
- 15'0 x 7'5 Kitchen Diner
- 16'1 x 8'3 Garage
- Close To Town & Station
- Excellent Storage



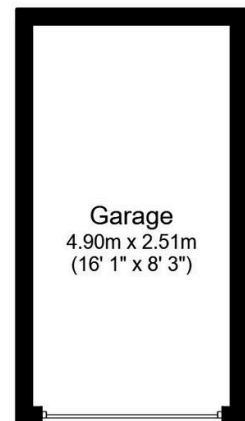
**First Floor**

Floor area 33.0 m<sup>2</sup> (355 sq.ft.)



**Second Floor**

Floor area 33.0 m<sup>2</sup> (355 sq.ft.)



**Garage**

Floor area 12.2 m<sup>2</sup> (131 sq.ft.)

**TOTAL: 78.1 m<sup>2</sup> (841 sq.ft.)**

This floor plan is for illustrative purposes only. It is not drawn to scale. Any measurements, floor areas (including any total floor area), openings and orientations are approximate. No details are guaranteed, they cannot be relied upon for any purpose and do not form any part of any agreement. No liability is taken for any error, omission or misstatement. A party must rely upon its own inspection(s). Powered by [www.Propertybox.io](http://www.Propertybox.io)