


Market Square, Horsham

Guide Price £400,000

 2  2  2



A charming Grade II Listed Cottage in Central Horsham, with a host of original features, boasting accommodation across three floors, an En Suite to the Principal Bedroom and a 19ft Kitchen Diner.

Tenure: Freehold
Council Tax Band: C

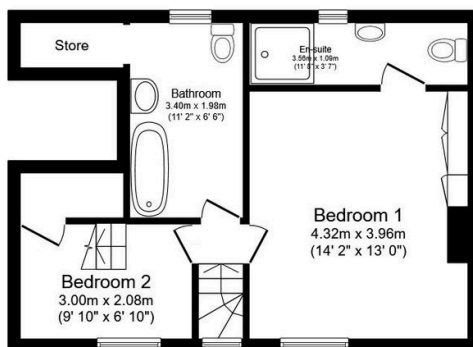
Key Features

- Watch Our Video Tour
- Charming Period Cottage
- Cosy Living Room
- En Suite To Principal Bedroom
- Accommodation Over Three Floors
- Grade II Listed
- Host Of Original Features
- 19ft Kitchen Diner
- Town Centre Location
- Loft Room



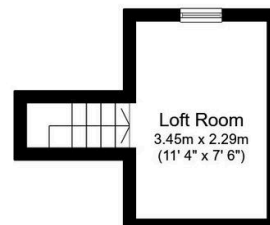
Ground Floor

Floor area 29.2 m² (314 sq.ft.)



First Floor

Floor area 39.5 m² (425 sq.ft.)



Second Floor

Floor area 9.4 m² (101 sq.ft.)

TOTAL: 78.1 m² (841 sq.ft.)

This floor plan is for illustrative purposes only. It is not drawn to scale. Any measurements, floor areas (including any total floor area), openings and orientations are approximate. No details are guaranteed, they cannot be relied upon for any purpose and do not form any part of any agreement. No liability is taken for any error, omission or misstatement. A party must rely upon its own inspection(s). Powered by www.Propertybox.io