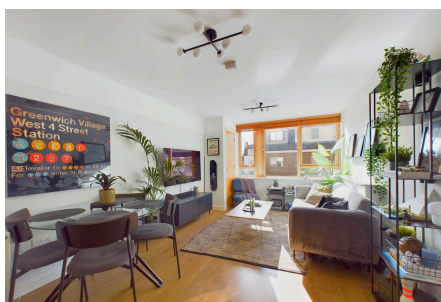


## Denne Parade, Horsham

Offers Over £215,000

1 1 1



An impressive First Floor Apartment located in central Horsham, boasting a 22ft open plan Kitchen/Living Area, large double bedroom and allocated parking.

Tenure: Leasehold

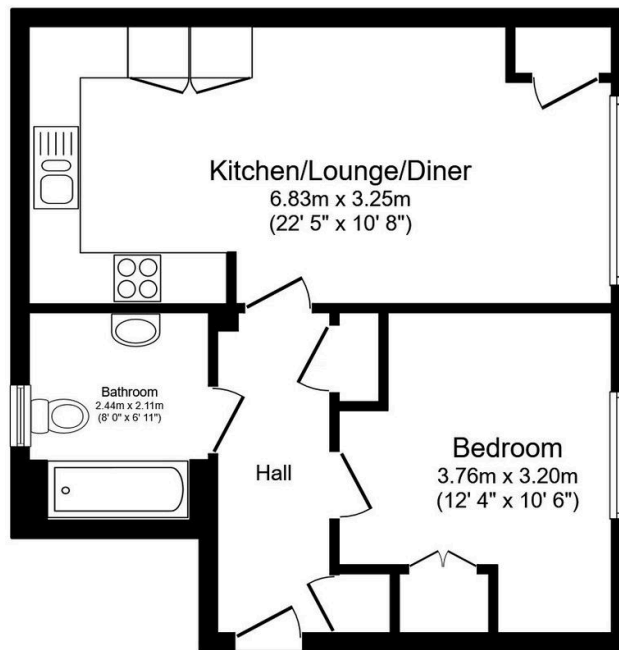
Lease Length: 114 years

Council Tax Band: B

EPC: Potential B - Current B

## Key Features

- Watch Our Video Tour
- 22ft Open Plan Living Room
- Excellent Storage
- Allocated Parking
- Long Lease
- Large Double Bedroom
- Stylish Integrated Kitchen
- 8'0 x 6'11 Bathroom With Window
- Town Centre Location
- 0.5 Miles To Horsham Station



### First Floor

Floor area 45.7 m<sup>2</sup> (491 sq.ft.)

TOTAL: 45.7 m<sup>2</sup> (491 sq.ft.)

This floor plan is for illustrative purposes only. It is not drawn to scale. Any measurements, floor areas (including any total floor area), openings and orientations are approximate. No details are guaranteed, they cannot be relied upon for any purpose and do not form any part of any agreement. No liability is taken for any error, omission or misstatement. A party must rely upon its own inspection(s). Powered by [www.Propertybox.io](http://www.Propertybox.io)