


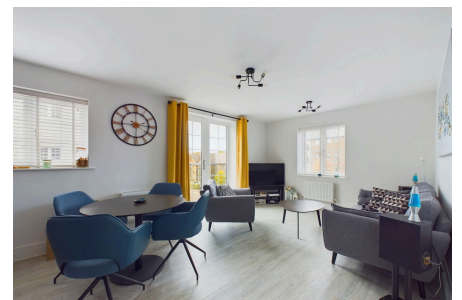
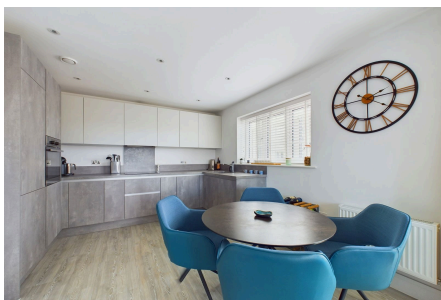


## Highwood, Horsham

Guide Price £310,000

 2  2  1



A stunning Two Double Bedroom Apartment offered for sale with No Onwards Chain, boasting Underground Parking for two cars, a Lift to all floors and a 23ft Open Plan Living Area.

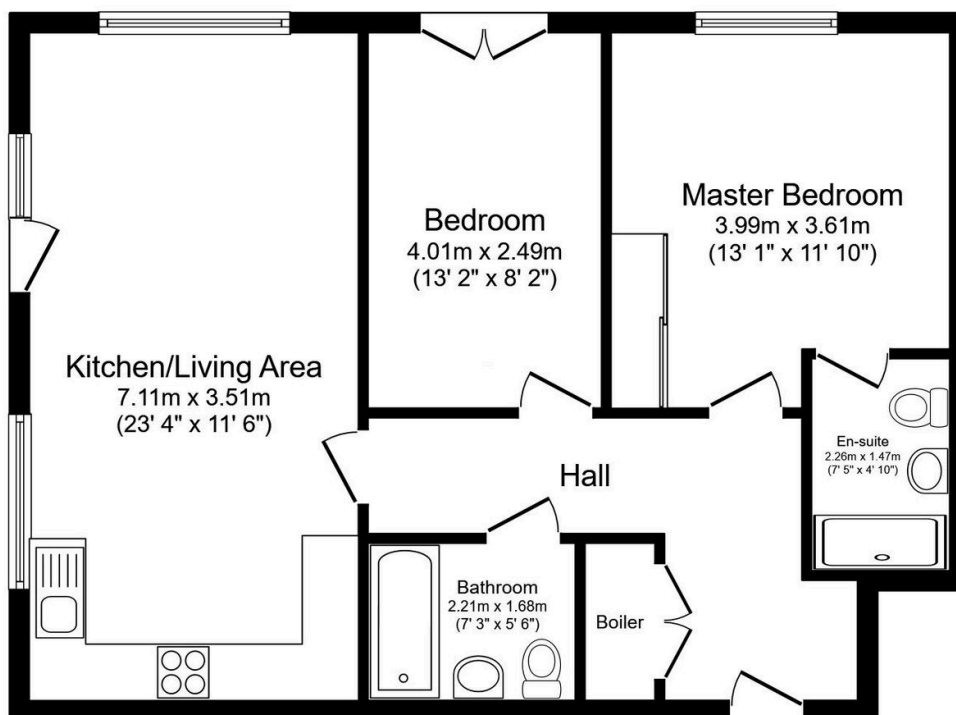
Tenure: Leasehold

Council Tax Band: C

EPC Rating: Current B - Potential B

## Key Features

- Watch Our Video Tour
- Stunning Second Floor Apartment
- Luxurious En Suite To Master
- Gated Underground Parking x2
- Lift To All Floors
- No Onward Chain
- Two Large Double Bedrooms
- Stylish Family Bathroom
- Private Residents Only Garden
- 23ft Double Aspect Living Area



TOTAL: 68.4 m<sup>2</sup> (736 sq.ft.)

This floor plan is for illustrative purposes only. It is not drawn to scale. Any measurements, floor areas (including any total floor area), openings and orientations are approximate. No details are guaranteed, they cannot be relied upon for any purpose and do not form any part of any agreement. No liability is taken for any error, omission or misstatement. A party must rely upon its own inspection(s). Powered by [www.Propertybox.io](http://www.Propertybox.io)