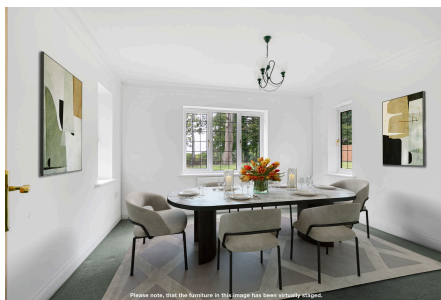


Steeres Hill, Rusper

Guide Price £1,100,000

5 3 3



An imposing Detached Family Home boasting over 2600 Sq Ft of Accommodation in a Quiet Village setting, boasting Spectacular Views, an extremely Flexible Layout and No Onwards Chain.

Tenure: Freehold
Council Tax: Band G
EPC Rating: Current E - Potential D

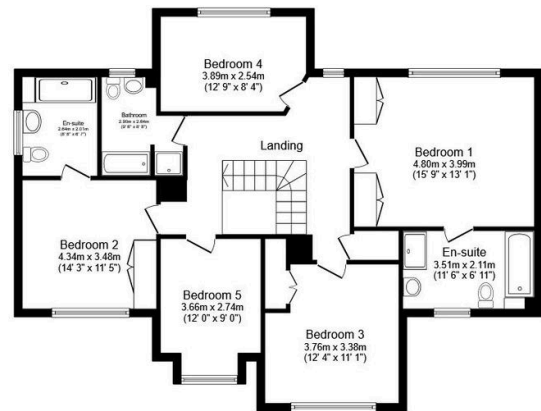
Key Features

- Watch Our Video Tour
- Five Generous Double Bedrooms
- Four Separate Reception Rooms
- Three Bathrooms
- 18ft x 18ft Double Garage
- Over 2600 SqFt of Accommodation
- Quiet Cul De Sac Location
- Far Reaching Views Over Fields
- 20ft x 19ft Kitchen Breakfast Room
- Impressive Detached Family Home



Ground Floor

Floor area 147.2 m² (1,585 sq.ft.)



First Floor

Floor area 103.5 m² (1,114 sq.ft.)

TOTAL: 250.8 m² (2,699 sq.ft.)

This floor plan is for illustrative purposes only. It is not drawn to scale. Any measurements, floor areas (including any total floor area), openings and orientations are approximate. No details are guaranteed, they cannot be relied upon for any purpose and do not form any part of any agreement. No liability is taken for any error, omission or misstatement. A party must rely upon its own inspection(s). Powered by www.Propertybox.io