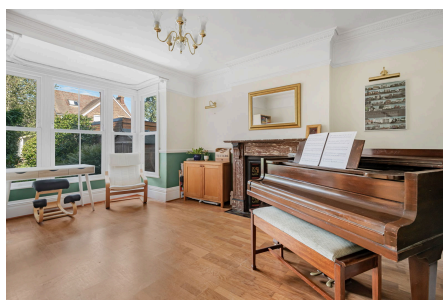


Bedford Road, Horsham

Guide Price £850,000

🛏 5 🚿 2 🚗 2



An imposing Four Storey Detached Family Home in Central Horsham, boasting over 2200 SqFt of accommodation, Five Large Double Bedrooms, an extended 21ft Kitchen Diner and a host of Period Features.

Tenure: Freehold
Council Tax: Band E
EPC Rating: Current E - Potential D

Key Features

- Watch Our Video Tour
- Accommodation Over Four Floors
- Off Street Parking
- Extended 21ft Kitchen Diner
- 0.4 Miles From Town & Station
- Detached Period Home
- Five Large Double Bedrooms
- Host Of Period Features
- Over 2200 SqFt of Accommodation
- Excellent Potential To Personalise



TOTAL: 210.2 m² (2,262 sq.ft.)

This floor plan is for illustrative purposes only. It is not drawn to scale. Any measurements, floor areas (including any total floor area), openings and orientations are approximate. No details are guaranteed, they cannot be relied upon for any purpose and do not form any part of any agreement. No liability is taken for any error, omission or misstatement. A party must rely upon its own inspection(s). Powered by www.Propertybox.io