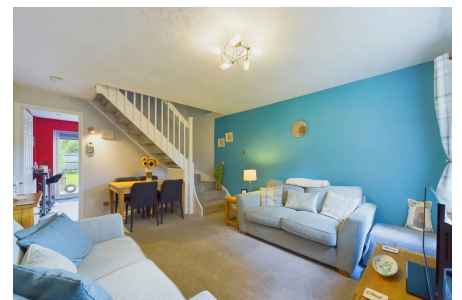


Ropeland Way, Horsham

Guide Price £360,000

🛏️ 2 🚗 1 🚗 1

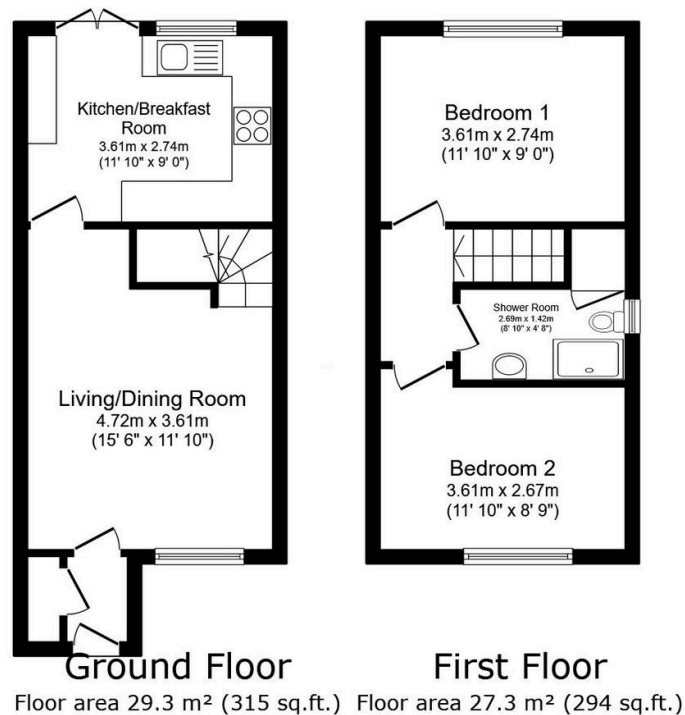


An attractive Modern Home tucked away at the end of a Small Cul De Sac, boasting Two Double Bedrooms, a stylish Kitchen Breakfast Room and a refitted Luxurious Shower Room.

Tenure: Freehold
Council Tax Band: C
EPC Rating: Current D - Potential B

Key Features

- Watch Our Video Tour
- Off Street Parking For 2-3 Cars
- Luxurious Refitted Shower Room
- 15'6 x 11'10 Living/Dining Room
- Modern Family Home
- Two Generous Double Bedrooms
- Cul De Sac Location
- Attractive Rear Garden
- Stylish 11ft Kitchen Breakfast Room
- Overlooking Attractive Green



TOTAL: 56.6 m² (609 sq.ft.)

This floor plan is for illustrative purposes only. It is not drawn to scale. Any measurements, floor areas (including any total floor area), openings and orientations are approximate. No details are guaranteed, they cannot be relied upon for any purpose and do not form any part of any agreement. No liability is taken for any error, omission or misstatement. A party must rely upon its own inspection(s). Powered by www.Propertybox.io