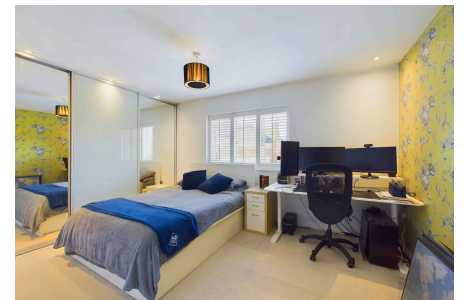
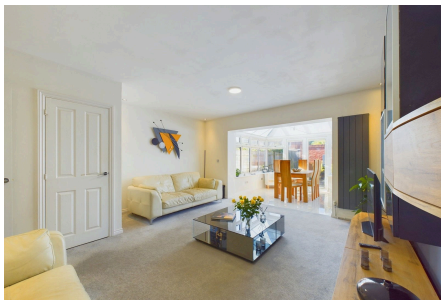


Pines Ridge, Horsham

Guide Price £500,000

🛏️ 3 🚿 2 🚗 1



A modern Three Double Bedrooms Home located in a Small Cul De Sac, boasting a 26ft Open Plan Living Area, South West Facing Garden and a 17ft Garage with parking to the front.

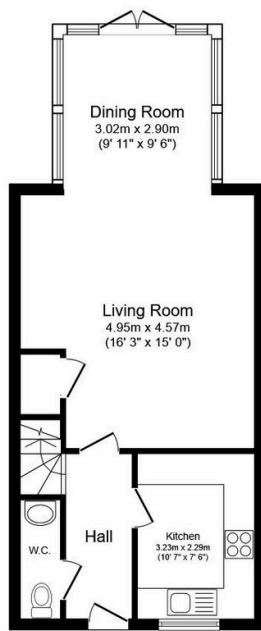
Tenure; Freehold

EPC Rating: Current C - Potential B

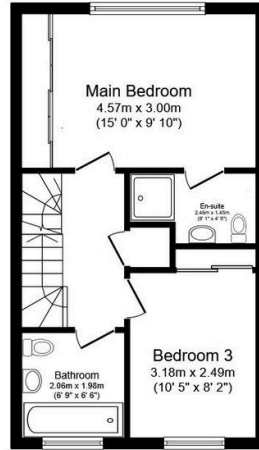
Council Tax Band: D

Key Features

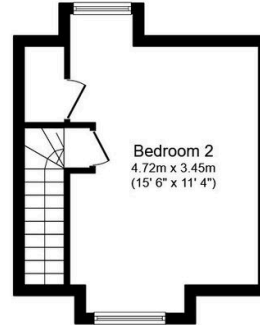
- Watch Our Video Tour
- 26ft Open Plan Living Area
- 17ft Garage & Driveway Parking
- Accommodation Across Three Floors
- Tanbridge School Catchment
- Three Generous Double Bedrooms
- South West Facing Rear Garden
- Cul De Sac Location
- Stylish Modern Fitted Kitchen
- En Suite To Master Bedroom



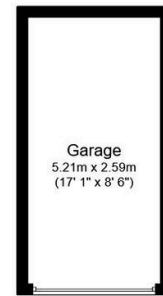
Ground Floor
Floor area 46.9 m² (505 sq.ft.)



First Floor
Floor area 37.9 m² (407 sq.ft.)



Second Floor
Floor area 23.1 m² (249 sq.ft.)



Garage
Floor area 13.5 m² (145 sq.ft.)

TOTAL: 121.4 m² (1,307 sq.ft.)

This floor plan is for illustrative purposes only. It is not drawn to scale. Any measurements, floor areas (including any total floor area), openings and orientations are approximate. No details are guaranteed, they cannot be relied upon for any purpose and do not form any part of any agreement. No liability is taken for any error, omission or misstatement. A party must rely upon its own inspection(s). Powered by www.Propertybox.io