

Potters Place, Horsham

£450,000

🛏 2 🚿 2 🚗 1

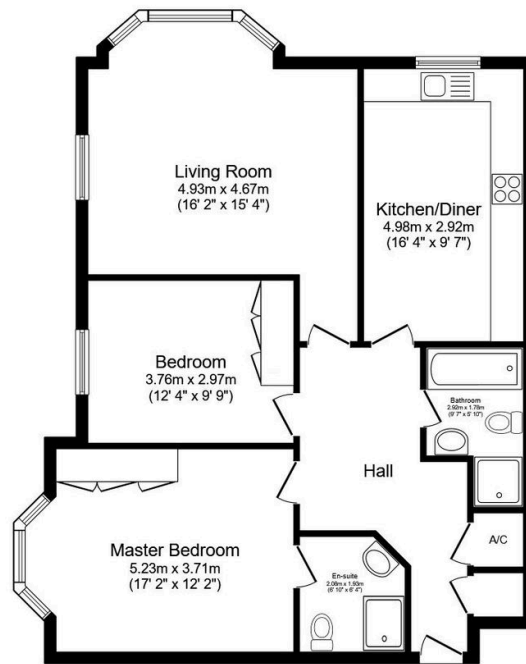


An exceptional Ground Floor Apartment in an exclusive gated development for the over 55's, boasting under ground parking with lift to all floors, two large Double Bedrooms and no onward chain.

Tenure: Leasehold
Lease Length: 101 Years
Council Tax Band: E
EPC: Current C - Potential C

Key Features

- Watch Our Video Tour
- Exclusive Development For Over 55's
- Two Large Double Bedrooms
- Spacious Ground Floor Apartment
- Underground Parking With Lift To All Floors
- En Suite Wet Room To Master Bedroom
- Double Aspect 16'2 x 15'4 Living Room
- 16'4 x 9'7 Kitchen Diner
- Town Centre Location
- No Onward Chain



Floor Plan

Floor area 89.2 m² (960 sq.ft.)

TOTAL: 89.2 m² (960 sq.ft.)

This floor plan is for illustrative purposes only. It is not drawn to scale. Any measurements, floor areas (including any total floor area), openings and orientations are approximate. No details are guaranteed, they cannot be relied upon for any purpose and do not form any part of any agreement. No liability is taken for any error, omission or misstatement. A party must rely upon its own inspection(s). Powered by www.Propertybox.io