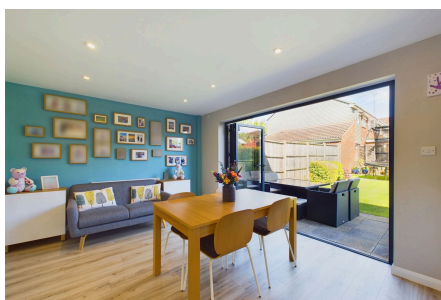


Heath Way, Horsham

Guide Price £525,000

🛏 4 🚗 2 🛋 2



A beautifully presented and extended Family Home located close to popular homes, boasting a stylish 23ft open plan Kitchen Dining Room, attractive Rear Garden and two Bathrooms.

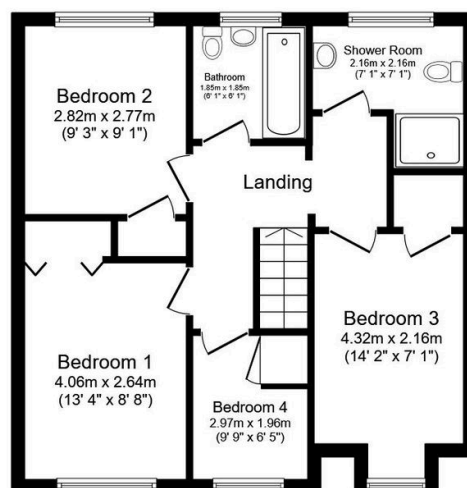
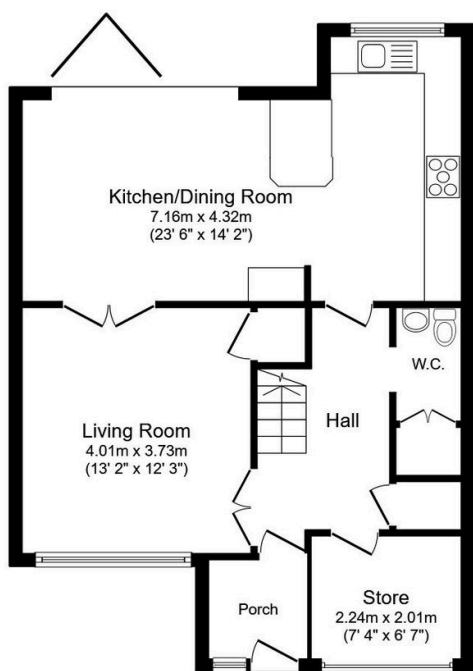
Tenure: Freehold

Council Tax Band: D

EPC: Current C - Potential B

Key Features

- Watch Our Video Tour
- 23ft Open Plan Kitchen Dining Room
- Four Bedrooms
- Attractive Rear Garden
- 0.8 Miles To Littlehaven Station
- Extended Family Home
- Bathroom & Separate Shower Room
- WC/Utility Room
- Popular School Catchment
- Beautifully Presented Throughout



TOTAL: 114.4 m² (1,231 sq.ft.)

This floor plan is for illustrative purposes only. It is not drawn to scale. Any measurements, floor areas (including any total floor area), openings and orientations are approximate. No details are guaranteed, they cannot be relied upon for any purpose and do not form any part of any agreement. No liability is taken for any error, omission or misstatement. A party must rely upon its own inspection(s). Powered by www.Propertybox.io