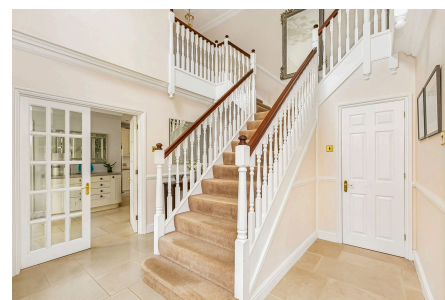


## Rookwood Park, Horsham

Guide Price £1,650,000

🛏 6 🚿 6 🛋 4



An Exciting Opportunity to purchase an Extended Family Home in the prestigious Rookwood Park, sitting on a Private 0.64 Acre Plot and boasting an 811 SqFt Detached Annexe, Double Garage and Gated Driveway, Four Reception Rooms and Separate Cabin with Swim Spa.

Tenure: Freehold

Council Tax Band: G

EPC Rating: Current C - Potential B

## Key Features

- Watch Our Video Tour
- Separate Two Bedroom, Two Bathroom Annex
- Prestigious Rookwood Park Development
- Four Separate Reception Rooms
- Further Potential To Extend (stpp)
- Four Double Bedroom Detached Family Home
- Gated 0.64 Acre Plot
- Two En Suites, Family Bathroom & Shower Room
- Detached Cabin With Swim Spa
- 20ft x 19ft Double Garage & Gated Driveway

Approximate Gross Internal Area 4208 sq ft – 390 sq m  
 Ground Floor Area 1597 sq ft – 148 sq m  
 First Floor Area 973 sq ft – 90 sq m  
 Annex Area 811 sq ft – 75 sq m  
 Garage Area 396 sq ft – 37 sq m  
 Outbuilding Area 431 sq ft – 40 sq m

