

Lambs Farm Road, Horsham

Guide Price £625,000

🛏 4 🚿 1 🚗 3

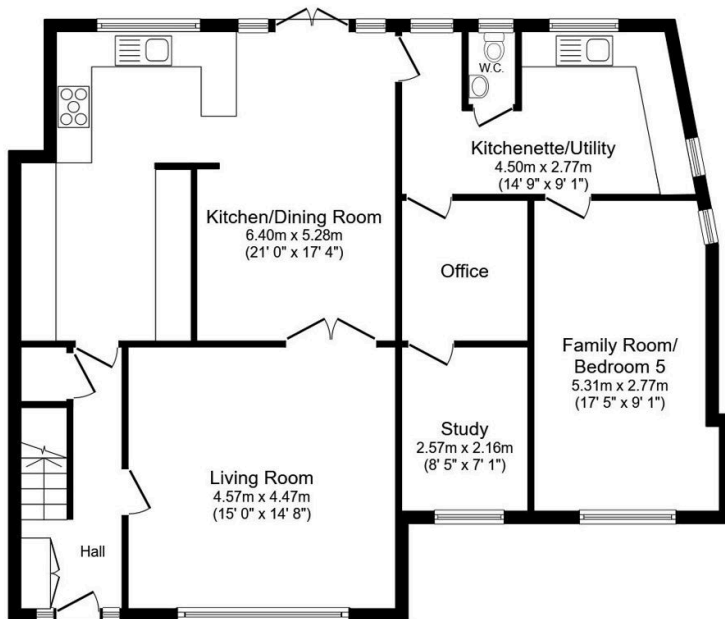


An extended four/five bedroom Family Home, boasting a 21ft x 17ft Kitchen Dining room, an exceptionally flexible layout, potential for a self contained annex and no onward chain.

Tenure: Freehold
Council Tax Band: E
EPC: TBC

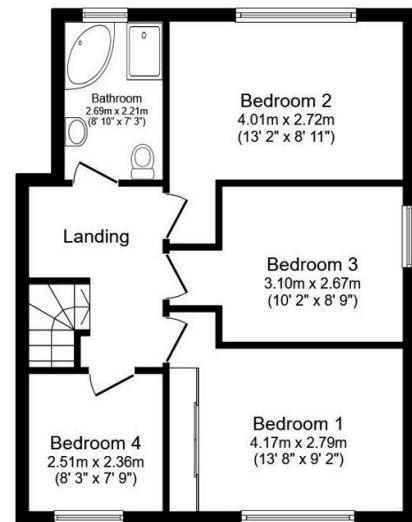
Key Features

- Watch The Video Tour
- 21ft x 17ft Kitchen Dining Room
- Potential Self Contained Annex
- Perfect Space For Home Office
- Luxurious Family Bathroom
- Four/Five Generous Bedrooms
- Extremely Flexible Layout
- No Onward Chain
- Large Landscaped Rear Garden
- Utility Room & WC



Ground Floor

Floor area 104.1 m² (1,121 sq.ft.)



First Floor

Floor area 51.9 m² (559 sq.ft.)

TOTAL: 156.0 m² (1,680 sq.ft.)

This floor plan is for illustrative purposes only. It is not drawn to scale. Any measurements, floor areas (including any total floor area), openings and orientations are approximate. No details are guaranteed, they cannot be relied upon for any purpose and do not form any part of any agreement. No liability is taken for any error, omission or misstatement. A party must rely upon its own inspection(s). Powered by www.Propertybox.io