



Angus Close, Horsham

Guide Price £700,000

 3  1  2



An impressive Detached Bungalow located in a sought after Cul De Sac, boasting spacious accommodation, Three Bedrooms, a 21ft x 14 Garage and a wonderful South East Facing Garden.

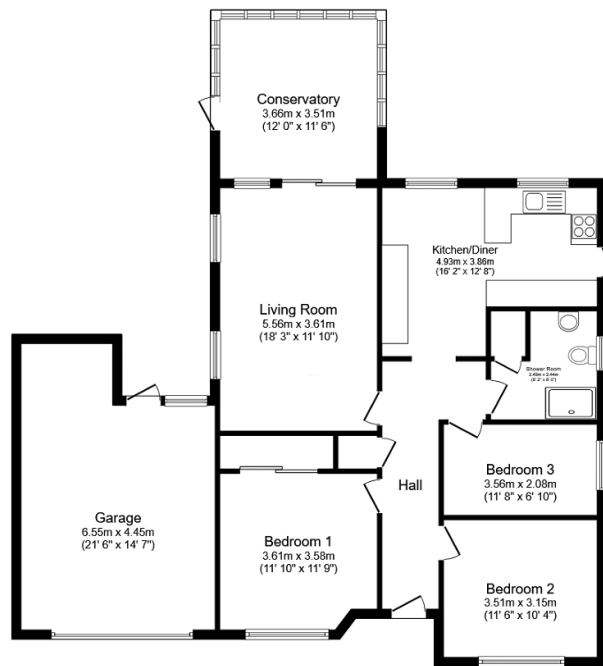
Tenure: Freehold

Council Tax Band: F

Energy Performance Rating: Current D - Potential B

Key Features

- Impressive Detached Bungalow
- Plenty Of Driveway Parking
- Refitted Shower Room
- Cul De Sac Location
- 0.6 Miles To Horsham Station
- 21ft x 14ft Garage
- Large South East Facing Garden
- Three Generous Bedrooms
- 16ft x 12ft Kitchen Diner
-



Floor Plan

Floor area 128.7 m² (1,385 sq.ft.)

TOTAL: 128.7 m² (1,385 sq.ft.)

This floor plan is for illustrative purposes only. It is not drawn to scale. Any measurements, floor areas (including any total floor area), openings and orientations are approximate. No details are guaranteed, they cannot be relied upon for any purpose and do not form any part of any agreement. No liability is taken for any error, omission or misstatement. A party must rely upon its own inspection(s). Powered by www.Propertybox.io