

Onslow Walk, Broadbridge Heath

Guide Price £500,000

3 2 1



A stylish Three Storey Family Home in a Popular Village location, boasting Three Double Bedrooms, an En Suite to the Master, 19ft Garage and a South Facing Garden.

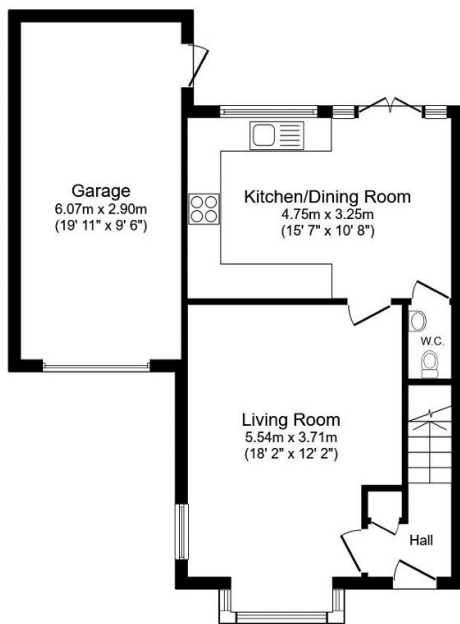
Tenure: Freehold

Council Tax Band: E

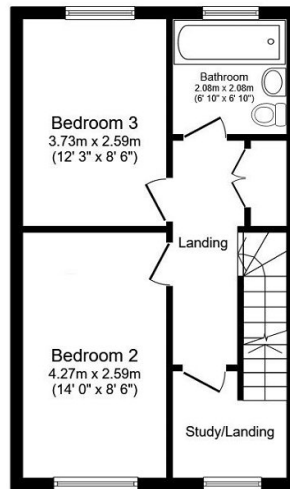
Energy Performance: Current B - Potential A

Key Features

- Watch The Video Tour
- Master Bedroom With En Suite
- 18ft Bay Fronted Living Room
- Downstairs WC
- 19ft Garage & Driveway Parking
- Three Double Bedrooms
- Luxurious Family Bathroom
- 15'7 x 10'8 Kitchen/Dining Room
- South Facing Garden
- Popular Village Location



Ground Floor
Floor area 58.3 m² (628 sq.ft.)



First Floor
Floor area 39.2 m² (422 sq.ft.)



Second Floor
Floor area 27.2 m² (293 sq.ft.)

TOTAL: 124.7 m² (1,343 sq.ft.)

This floor plan is for illustrative purposes only. It is not drawn to scale. Any measurements, floor areas (including any total floor area), openings and orientations are approximate. No details are guaranteed, they cannot be relied upon for any purpose and do not form any part of any agreement. No liability is taken for any error, omission or misstatement. A party must rely upon its own inspection(s). Powered by www.Propertybox.io