

Lime Kiln Road, Mannings Heath

Guide Price £700,000

🛏️ 4 🚿 2 🚗 2

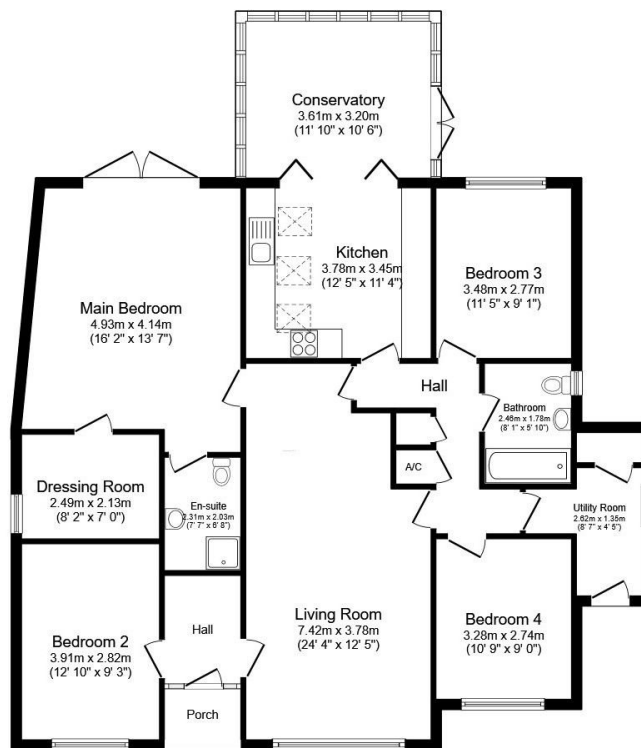


A stunning four double bedrooms Detached Bungalow located in a popular village, boasting a bright 24ft Living Room, stunning kitchen and master suite with Dressing Room & luxurious ensuite.

Tenure: Freehold
Council Tax Band: G
EPC: Current D - Potential C

Key Features

- Watch The Video Tour
- Impressive Detached Bungalow
- Four Double Bedrooms
- Master With Walk In Wardrobe
- Two Bathrooms
- Stunning Kitchen
- 24ft Living Room
- Private Rear Garden
- Large Driveway
- Popular Village Location



Floor Plan

Floor area 140.7 m² (1,514 sq.ft.)