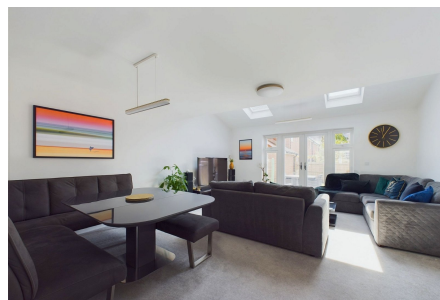


Chessall Avenue, Southwater

Guide Price £535,000

3 2 1



A beautiful Family Home built in 2018 by Berkeley Homes, boasting Generous Bedrooms, a stunning 20ft Kitchen Breakfast Room, South Facing Rear Garden and a 20ft Garage with parking.

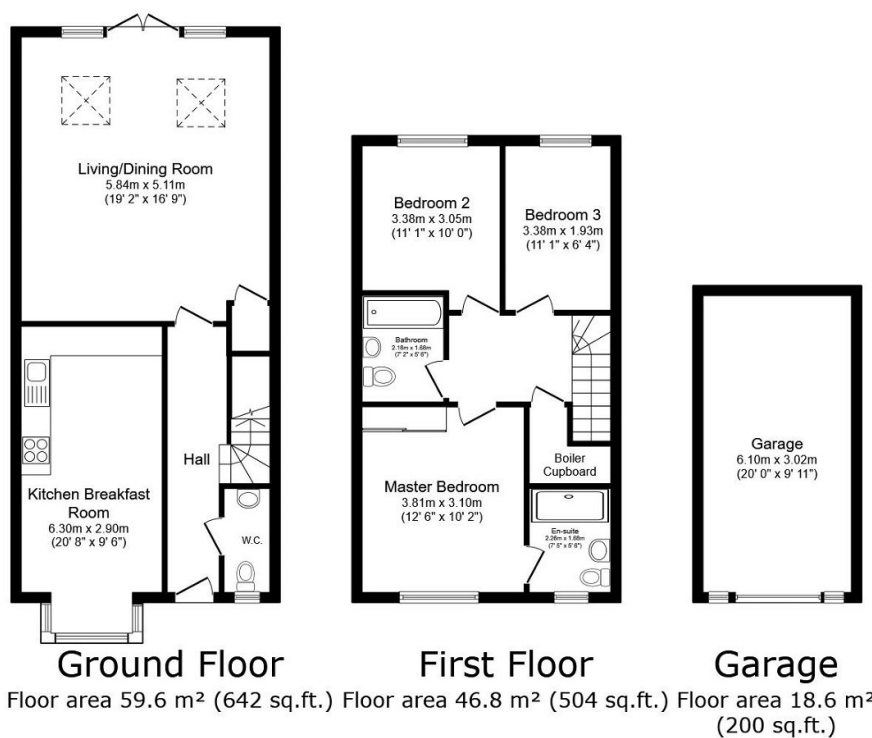
Tenure: Freehold

EPC Rating: Current B - Potential A

Council Tax Band: E

Key Features

- Stunning Family Home
- 19ft x 16ft Living Room
- Three Generous Bedrooms
- 20ft Garage & Parking
- Views Over Countryside
- South Facing Garden
- 20ft Kitchen Breakfast Room
- Master With En Suite
- Luxurious Family Bathroom
- Popular Village Location



TOTAL: 125.0 m² (1,346 sq.ft.)

This floor plan is for illustrative purposes only. It is not drawn to scale. Any measurements, floor areas (including any total floor area), openings and orientations are approximate. No details are guaranteed, they cannot be relied upon for any purpose and do not form any part of any agreement. No liability is taken for any error, omission or misstatement. A party must rely upon its own inspection(s). Powered by www.Propertybox.io