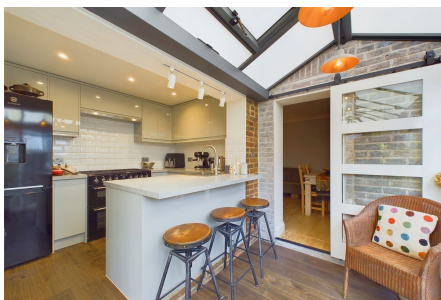


## Burford Road, Horsham

Guide Price £475,000

🛏️ 2 🚿 2 🚗 2



A charming Period Home located close to Horsham Station, boasting an extended 18ft Kitchen/ Family Room, two double bedrooms, two separate Reception Rooms, and two bathrooms.

Tenure: Freehold

Council Tax Band: D

EPC: Current D - Potential C

## Key Features

- Attractive Period Home
- En Suite Bathroom To Master
- Extended 18ft Kitchen Family Room
- Two Separate Reception Rooms
- 0.2 Miles From Horsham Station
- Two Large Double Bedrooms
- Separate Shower Room
- Potential To Convert The Loft (stpp)
- Landscaped Rear Garden
- Popular School Catchment



TOTAL: 98.3 m<sup>2</sup> (1,058 sq.ft.)

This floor plan is for illustrative purposes only. It is not drawn to scale. Any measurements, floor areas (including any total floor area), openings and orientations are approximate. No details are guaranteed, they cannot be relied upon for any purpose and do not form any part of any agreement. No liability is taken for any error, omission or misstatement. A party must rely upon its own inspection(s). Powered by [www.Propertybox.io](http://www.Propertybox.io)