

Parsonage Road, Horsham

Guide Price £775,000

4 1 3



A beautiful 1930's detached family home sat on a generous 0.2 ACRE PLOT, boasting four large double bedrooms, enormous potential to extend (stpp) and no onward chain.

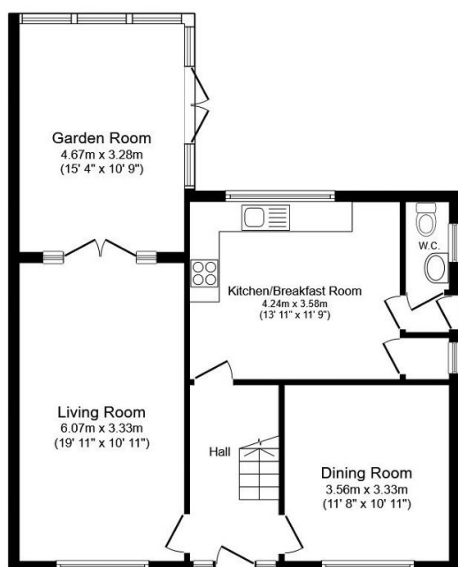
Tenure: Freehold

Council Tax Band: F

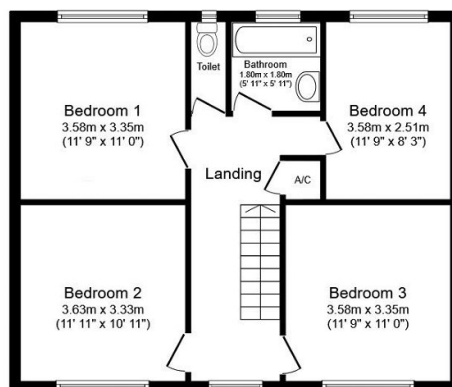
EPC: Current D - Potential C

Key Features

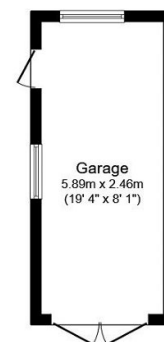
- Detached 1930's Family Home
- 0.2 Acre Plot
- 13'11 x 11'9 Kitchen Breakfast Room
- Scope To Personalise & Extend (stpp)
- No Onward Chain
- Four Large Double Bedrooms
- Three Separate Reception Rooms
- Charming Period Features
- Driveway & Detached Garage
- Over 100ft Rear Garden



Ground Floor
Floor area 74.6 m² (803 sq.ft.)



First Floor
Floor area 62.6 m² (674 sq.ft.)



Garage
Floor area 14.5 m² (156 sq.ft.)

TOTAL: 151.7 m² (1,633 sq.ft.)

This floor plan is for illustrative purposes only. It is not drawn to scale. Any measurements, floor areas (including any total floor area), openings and orientations are approximate. No details are guaranteed, they cannot be relied upon for any purpose and do not form any part of any agreement. No liability is taken for any error, omission or misstatement. A party must rely upon its own inspection(s). Powered by www.Propertybox.io