




Lapwing Close, Horsham

Guide Price £650,000

 4  2  2



An extended Detached Family Home tucked away in a small cul de sac, boasting four double bedrooms, and impressive open plan 33ft Reception Room and an 'L' shaped 16ft x 16ft Kitchen Breakfast Room.

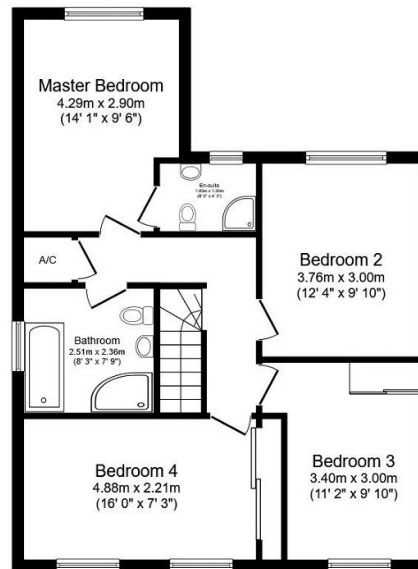
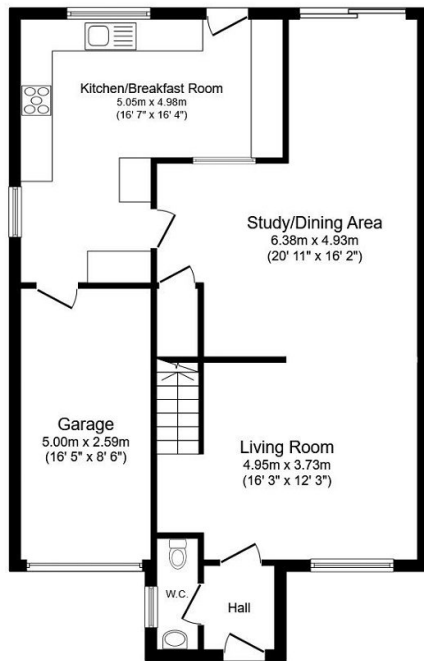
Tenure: Freehold

Council Tax: E

EPC: Current C - Potential B

Key Features

- Extended Detached Family Home
- Cul De Sac Location
- 16ft x 16ft Kitchen Breakfast Room
- Integral 16ft Garage
- Popular School Catchment
- Four Double Bedrooms
- 33ft Open Plan Living Room
- En Suite To Master Bedroom
- Attractive Rear Garden
- Large Family Bathroom



TOTAL: 144.4 m² (1,554 sq.ft.)

This floor plan is for illustrative purposes only. It is not drawn to scale. Any measurements, floor areas (including any total floor area), openings and orientations are approximate. No details are guaranteed, they cannot be relied upon for any purpose and do not form any part of any agreement. No liability is taken for any error, omission or misstatement. A party must rely upon its own inspection(s). Powered by www.Propertybox.io