

Broadwood Close, Horsham

Guide Price £475,000

3 2 1



An Extended Family Home tucked away at the end of a small cul de sac, boasting Three Large Double Bedroom, a stunning 23ft Kitchen/Dining Room and a luxurious Master Suite with Dressing Area and En Suite.

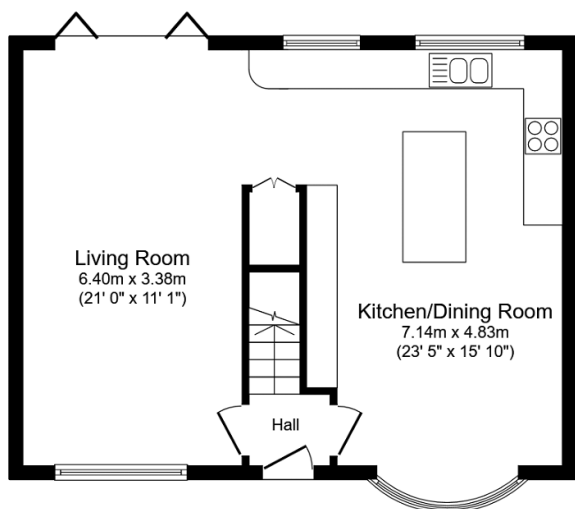
Tenure: Freehold

Council Tax: D

EPC: Current C - Potential B

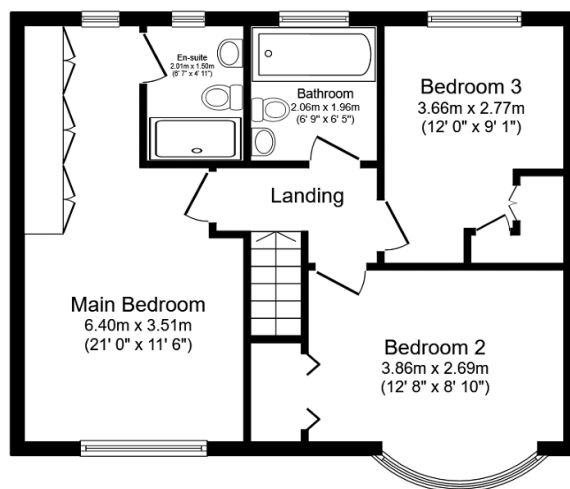
Key Features

- Extended Family Home
- 23ft x 15ft Kitchen Dining Room
- Cul De Sac Location
- Single Garage En Bloc
- 21ft x 11ft Living Room
- Three Large Double Bedrooms
- South Facing Rear Garden
- Generous Driveway Parking
- Dressing Area & En Suite To Master
- Beautifully Presented Throughout



Ground Floor

Floor area 54.1 m² (582 sq.ft.)



First Floor

Floor area 54.2 m² (584 sq.ft.)

TOTAL: 108.4 m² (1,166 sq.ft.)

This floor plan is for illustrative purposes only. It is not drawn to scale. Any measurements, floor areas (including any total floor area), openings and orientations are approximate. No details are guaranteed, they cannot be relied upon for any purpose and do not form any part of any agreement. No liability is taken for any error, omission or misstatement. A party must rely upon its own inspection(s). Powered by www.Propertybox.io