

Pondtail Walk, Kilnwood Vale

Guide Price £280,000

🛏️ 2 🚗 2 🛋️ 1



A stunning Two Double Bedroom First Floor Apartment in Kilnwood Vale, boasting an impressive 22ft Triple Aspect Kitchen/Living Area, En Suite to the Master Bedroom and Two Allocated Parking Spaces.

Tenure: Leasehold

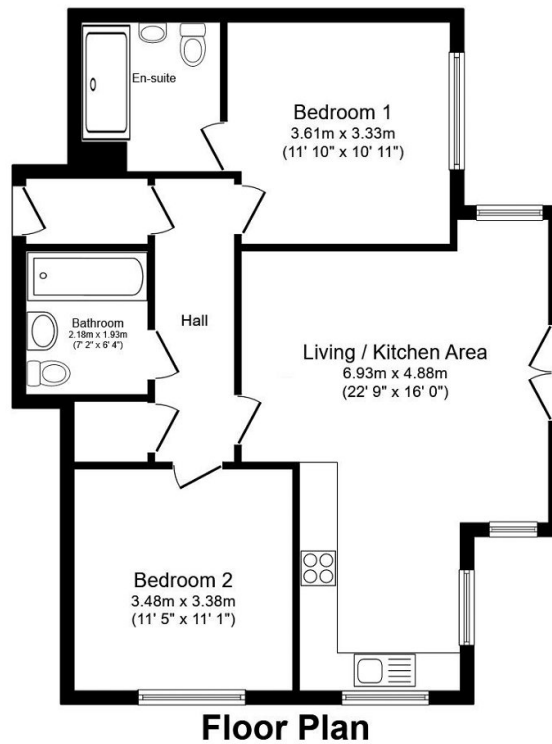
Lease Length: 241 years

Council Tax Band: C

EPC Rating: Current B - Potential B

Key Features

- Two Large Double Bedrooms
- En Suite To Master Bedroom
- First Floor Apartment
- Integrated Kitchen
- Ideal First Buy Or Investment
- 22ft Triple Aspect Kitchen/Living Area
- Luxurious Family Bathroom
- Two Allocated Parking Spaces
- Built In 2018
- Close To New Primary School



Total floor area 72.7 m² (782 sq.ft.) approx

This plan is for illustration purposes only and may not be representative of the property. Plan not to scale. Powered by PropertyBox