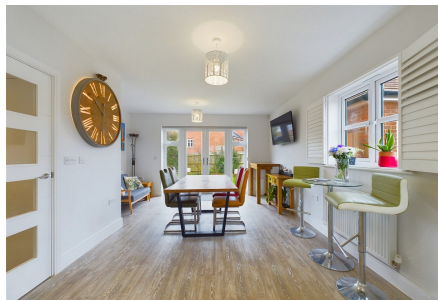


## Chessall Avenue, Broadacres, Southwater

Guide Price £750,000

🛏 4 🚗 2 🚗 2



A stunning Four Double Bedroom Detached Family Home, boasting a 24ft Kitchen Dining Room, a 21ft Detached Double Garage, Attractive Views over Farmland and is being offered for sale with No Onward Chain.

Tenure: Freehold

Council Tax Band: F

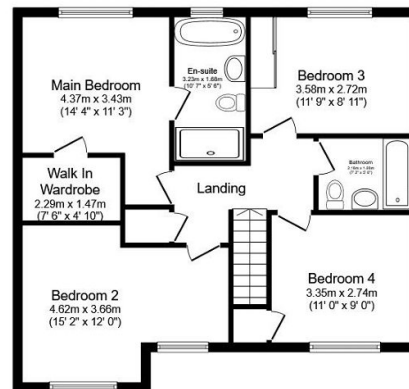
EPC Rating: Current B - Potential A

## Key Features

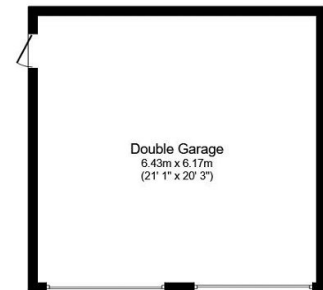
- Four Large Double Bedrooms
- Two Luxurious Bathrooms
- 21'1 x 20'3 Detached Double Garage
- Remainder of NHBC Guarantee
- Beautifully Presented Throughout
- No Onward Chain
- 24ft Triple Aspect Kitchen Diner
- Two Generous Reception Rooms
- Built In 2018 By Berkeley Homes
- Attractive Views Over Farmland



**Ground Floor**



**First Floor**



**Garage**

Total floor area 182.5 m<sup>2</sup> (1,964 sq.ft.) approx

This plan is for illustration purposes only and may not be representative of the property. Plan not to scale. Powered by PropertyBox