

New Street, Horsham

Guide Price £450,000

🛏 3 🚿 1 🚗 2



A greatly improved Period Home a 'stones throw' from Horsham Station, boasting Beautifully Presented accommodation, Three Double Bedrooms and potential to Convert the Loft (stpp).

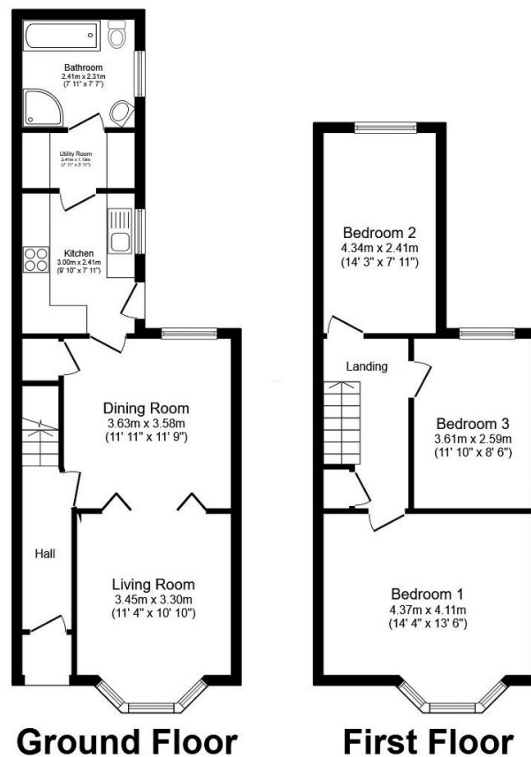
Tenure: Freehold

Council Tax Band: C

EPC Rating: Current C - Potential B

Key Features

- Three Generous Double Bedrooms
- Attractive Period Home
- Large Family Bathroom
- 0.5 Miles From Town Centre
- Many Period Features
- Two Separate Reception Rooms
- Stylish Kitchen
- 0.1 Miles From Horsham Station
- Potential To Convert Loft (stpp)
- Utility Room



Total floor area 93.2 m² (1,003 sq.ft.) approx

This plan is for illustration purposes only and may not be representative of the property. Plan not to scale. Powered by PropertyBox