

Three Acres, Horsham

Offers Over £525,000

🛏 3 🍴 2 🚗 1



An impressive Detached Chalet Bungalow located a short walk from Horsham Town Centre, boasting a 25ft Living Room, three Generous Bedrooms, Great Potential to Extend (stpp) and a stunning Rear Garden.

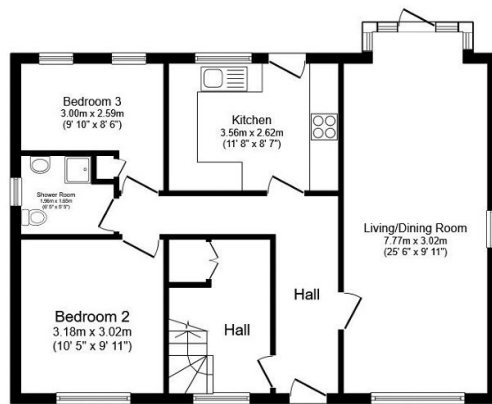
Tenure: Freehold

Council Tax Band: E

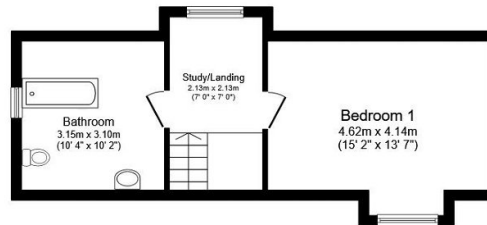
EPC Rating: Current D - Potential C

Key Features

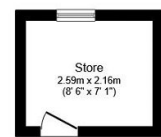
- Detached Chalet Bungalow
- 25ft Triple Aspect Living Room
- Family Bathroom & Shower Room
- 0.5 Miles From Town Centre
- Popular School Catchment
- Three Generous Bedrooms
- Stunning Rear Garden
- Driveway Parking
- Close To Local Shops
- Potential To Extend (stpp)



Ground Floor



First Floor



Outbuilding

Total floor area 107.0 m² (1,152 sq.ft.) approx

This plan is for illustration purposes only and may not be representative of the property. Plan not to scale. Powered by PropertyBox